

## Product datasheet for **TA334993**

### PELI3 Rabbit Polyclonal Antibody

#### Product data:

Product Type:	Primary Antibodies
Applications:	WB
Recommended Dilution:	WB
Reactivity:	Human
Host:	Rabbit
Isotype:	IgG
Clonality:	Polyclonal
Immunogen:	The immunogen for anti-PELI3 antibody: synthetic peptide directed towards the N terminal of human PELI3. Synthetic peptide located within the following region: VLEGNPEVGSPTS <del>DL</del> QHRGNKGSCVLSSPGEDAQPGEEPIKYGELIVLG
Formulation:	Liquid. Purified antibody supplied in 1x PBS buffer with 0.09% (w/v) sodium azide and 2% sucrose. <i>Note that this product is shipped as lyophilized powder to China customers.</i>
Purification:	Affinity Purified
Conjugation:	Unconjugated
Storage:	Store at -20°C as received.
Stability:	Stable for 12 months from date of receipt.
Predicted Protein Size:	48 kDa
Gene Name:	pellino E3 ubiquitin protein ligase family member 3
Database Link:	<a href="#">NP_001091980</a> <a href="#">Entrez Gene 246330 Human</a> <a href="#">Q8N2H9</a>



[View online »](#)

**Background:**

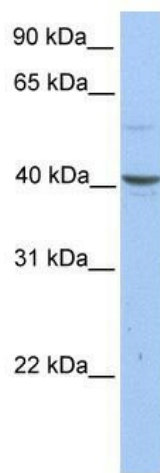
Toll-like receptors (TLRs) and IL1R (IL1R1) are part of the innate immune response aimed at mobilizing defense mechanisms in response in infection or injury. Pellino proteins, such as PELI3, are intermediate components in the signaling cascades initiated by TLRs and IL1R. Toll-like receptors (TLRs; see MIM 603030) and IL1R (IL1R1; MIM 147810) are part of the innate immune response aimed at mobilizing defense mechanisms in response in infection or injury. Pellino proteins, such as PELI3, are intermediate components in the signaling cascades initiated by TLRs and IL1R (Jensen and Whitehead, 2003 [PubMed 12874243]). [supplied by OMIM]

**Synonyms:**

MGC35521

**Note:**

Immunogen Sequence Homology: Pig: 100%; Horse: 100%; Human: 100%; Bovine: 93%; Dog: 86%; Rat: 86%; Guinea pig: 86%; Rabbit: 79%; Mouse: 77%

**Product images:**

WB Suggested Anti-PELI3 Antibody Titration: 0.2-1 ug/ml; Positive Control: HepG2 cell lysate