

## Product datasheet for **TA334991**

### TMEM184A Rabbit Polyclonal Antibody

#### Product data:

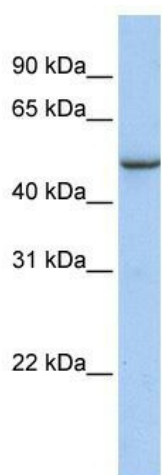
Product Type:	Primary Antibodies
Applications:	WB
Recommended Dilution:	WB
Reactivity:	Human
Host:	Rabbit
Isotype:	IgG
Clonality:	Polyclonal
Immunogen:	The immunogen for anti-TMEM184A antibody: synthetic peptide directed towards the C terminal of human TMEM184A. Synthetic peptide located within the following region: CQVYAEKKENSPAPPAPMQSISSGIRETVSPQDIVQDAIHNFPAYQHYT
Formulation:	Liquid. Purified antibody supplied in 1x PBS buffer with 0.09% (w/v) sodium azide and 2% sucrose. <i>Note that this product is shipped as lyophilized powder to China customers.</i>
Purification:	Affinity Purified
Conjugation:	Unconjugated
Storage:	Store at -20°C as received.
Stability:	Stable for 12 months from date of receipt.
Predicted Protein Size:	46 kDa
Gene Name:	transmembrane protein 184A
Database Link:	<a href="#">NP_001091089</a> <a href="#">Entrez Gene 202915 Human</a> <a href="#">Q6ZMB5</a>
Background:	TMEM184A is a multi-pass membrane protein. Potential. It belongs to the UPF0206 family. The exact function of TMEM184A remains unknown.
Synonyms:	SDMG1
Note:	Immunogen Sequence Homology: Human: 100%; Dog: 93%; Pig: 86%; Rat: 86%; Guinea pig: 86%; Horse: 79%; Mouse: 79%



[View online »](#)

Protein Families: Transmembrane

### Product images:



WB Suggested Anti-TMEM184A Antibody  
Titration: 0.2-1 ug/ml; Positive Control: Human  
Placenta