

Product datasheet for **TA334989**

ARSA Rabbit Polyclonal Antibody

Product data:

Product Type:	Primary Antibodies
Applications:	WB
Recommended Dilution:	WB
Reactivity:	Human
Host:	Rabbit
Isotype:	IgG
Clonality:	Polyclonal
Immunogen:	The immunogen for anti-ARSA antibody: synthetic peptide directed towards the N terminal of human ARSA. Synthetic peptide located within the following region: DLGCYGHPSSTTPNLDQLAAGGLRFTDFYVPVSLCTPSRAALLTGRLPVR
Formulation:	Liquid. Purified antibody supplied in 1x PBS buffer with 0.09% (w/v) sodium azide and 2% sucrose. <i>Note that this product is shipped as lyophilized powder to China customers.</i>
Purification:	Affinity Purified
Conjugation:	Unconjugated
Storage:	Store at -20°C as received.
Stability:	Stable for 12 months from date of receipt.
Predicted Protein Size:	56 kDa
Gene Name:	arylsulfatase A
Database Link:	NP_000478 Entrez Gene 410 Human P15289
Background:	ARSA hydrolyzes cerebroside sulfate. Defects in ARSA are a cause of leukodystrophy metachromatic (MLD).The protein encoded by this gene hydrolyzes cerebroside sulfate to cerebroside and sulfate. Defects in this gene lead to metachromatic leucodystrophy (MLD), a progressive demyelination disease which results in a variety of neurological symptoms and ultimately death. Multiple alternatively spliced transcript variants, one of which encodes a distinct protein, have been described for this gene.



[View online »](#)

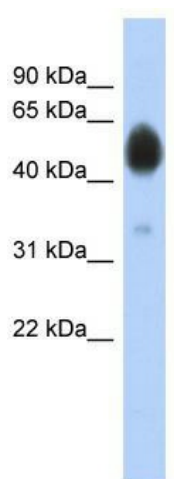
Synonyms: MLD

Note: Immunogen Sequence Homology: Pig: 100%; Rat: 100%; Horse: 100%; Human: 100%; Mouse: 100%; Bovine: 100%; Rabbit: 100%; Guinea pig: 100%; Dog: 92%

Protein Families: Druggable Genome

Protein Pathways: Lysosome, Sphingolipid metabolism

Product images:



WB Suggested Anti-ARSA Antibody Titration: 0.2-1 ug/ml; ELISA Titer: 1: 312500; Positive Control: COLO205 cell lysate