

Product datasheet for **TA334988**

KLKBL4 (PRSS54) Rabbit Polyclonal Antibody

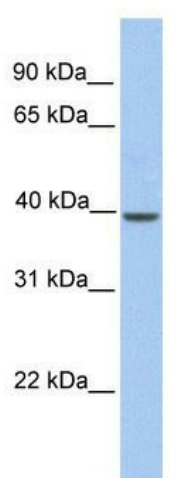
Product data:

Product Type:	Primary Antibodies
Applications:	WB
Recommended Dilution:	WB
Reactivity:	Human
Host:	Rabbit
Isotype:	IgG
Clonality:	Polyclonal
Immunogen:	The immunogen for anti-PRSS54 antibody: synthetic peptide directed towards the C terminal of human PRSS54. Synthetic peptide located within the following region: EASVQPLYDYGGEGVGEGRIFAGQNRLYQPPEIILVSFVLVFFCSSI
Formulation:	Liquid. Purified antibody supplied in 1x PBS buffer with 0.09% (w/v) sodium azide and 2% sucrose. <i>Note that this product is shipped as lyophilized powder to China customers.</i>
Purification:	Affinity Purified
Conjugation:	Unconjugated
Storage:	Store at -20°C as received.
Stability:	Stable for 12 months from date of receipt.
Predicted Protein Size:	44 kDa
Gene Name:	protease, serine 54
Database Link:	NP_001073961 Entrez Gene 221191 Human Q6PEW0
Background:	PRSS54 is a secreted protein. PRSS54 belongs to the peptidase S1 family, plasma kallikrein subfamily. It contains 1 peptidase S1 domain.
Synonyms:	CT67; KLKBL4
Note:	Immunogen Sequence Homology: Human: 100%; Horse: 90%
Protein Families:	Druggable Genome



[View online »](#)

Product images:



WB Suggested Anti-PRSS54 Antibody Titration:
0.2-1 ug/ml; Positive Control: Human Muscle