

## Product datasheet for **TA334987**

### FGR Rabbit Polyclonal Antibody

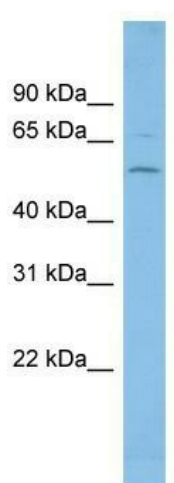
#### Product data:

Product Type:	Primary Antibodies
Applications:	WB
Recommended Dilution:	WB
Reactivity:	Human, Mouse
Host:	Rabbit
Isotype:	IgG
Clonality:	Polyclonal
Immunogen:	The immunogen for anti-FGR antibody: synthetic peptide directed towards the middle region of human FGR. Synthetic peptide located within the following region: CPPGCPASLYEAMEQWRLDPEERPTFEYLQSFLEDYFTSAEPQYQPGDQ
Formulation:	Liquid. Purified antibody supplied in 1x PBS buffer with 0.09% (w/v) sodium azide and 2% sucrose. <i>Note that this product is shipped as lyophilized powder to China customers.</i>
Purification:	Affinity Purified
Conjugation:	Unconjugated
Storage:	Store at -20°C as received.
Stability:	Stable for 12 months from date of receipt.
Predicted Protein Size:	59 kDa
Gene Name:	FGR proto-oncogene, Src family tyrosine kinase
Database Link:	<a href="#">NP_001036194</a> <a href="#">Entrez Gene 14191 Mouse</a> <a href="#">Entrez Gene 2268 Human</a> <a href="#">P09769</a>



[View online »](#)

<b>Background:</b>	This gene is a member of the Src family of protein tyrosine kinases (PTKs). The encoded protein contains N-terminal sites for myristylation and palmitoylation, a PTK domain, and SH2 and SH3 domains which are involved in mediating protein-protein interactions with phosphotyrosine-containing and proline-rich motifs, respectively. The protein localizes to plasma membrane ruffles, and functions as a negative regulator of cell migration and adhesion triggered by the beta-2 integrin signal transduction pathway. Infection with Epstein-Barr virus results in the overexpression of this gene. Multiple alternatively spliced variants, encoding the same protein, have been identified.
<b>Synonyms:</b>	c-fgr; c-src2; p55-Fgr; p55c-fgr; p58-Fgr; p58c-fgr; SRC2
<b>Note:</b>	Immunogen Sequence Homology: Human: 100%; Dog: 93%; Rat: 93%; Horse: 93%; Mouse: 93%; Rabbit: 92%; Bovine: 86%; Pig: 83%; Zebrafish: 83%; Guinea pig: 83%
<b>Protein Families:</b>	Druggable Genome, Protein Kinase
<b>Protein Pathways:</b>	Chemokine signaling pathway

**Product images:**

WB Suggested Anti-FGR Antibody Titration: 0.2-1 ug/ml; ELISA Titer: 1: 1562500; Positive Control: U937 cell lysate