

## Product datasheet for **TA334986**

### TRAK1 Rabbit Polyclonal Antibody

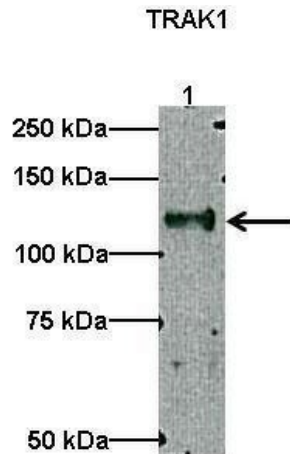
#### Product data:

Product Type:	Primary Antibodies
Applications:	WB
Recommended Dilution:	WB
Reactivity:	Human (Predicted: Cow, Dog, Pig, Rabbit, Rat, Horse)
Host:	Rabbit
Isotype:	IgG
Clonality:	Polyclonal
Immunogen:	The immunogen for anti-TRAK1 antibody: synthetic peptide directed towards the middle region of human TRAK1. Synthetic peptide located within the following region: ILETEAADLGNDRSKKPGTPTGSHDLETALRRLSLRRENYLSERRFF
Formulation:	Liquid. Purified antibody supplied in 1x PBS buffer with 0.09% (w/v) sodium azide and 2% sucrose. <i>Note that this product is shipped as lyophilized powder to China customers.</i>
Purification:	Affinity Purified
Conjugation:	Unconjugated
Storage:	Store at -20°C as received.
Stability:	Stable for 12 months from date of receipt.
Predicted Protein Size:	106 kDa
Gene Name:	trafficking kinesin protein 1
Database Link:	<a href="#">NP_001036111</a> <a href="#">Entrez Gene 316085 Rat</a> <a href="#">Entrez Gene 485610 Dog</a> <a href="#">Entrez Gene 22906 Human</a> <a href="#">Q9UPV9</a>
Background:	The specific function of the protein remains unknown.
Synonyms:	MILT1; OIP106
Note:	Immunogen Sequence Homology: Human: 100%; Dog: 93%; Pig: 93%; Horse: 93%; Bovine: 93%; Rabbit: 83%; Rat: 79%
Protein Families:	Transcription Factors

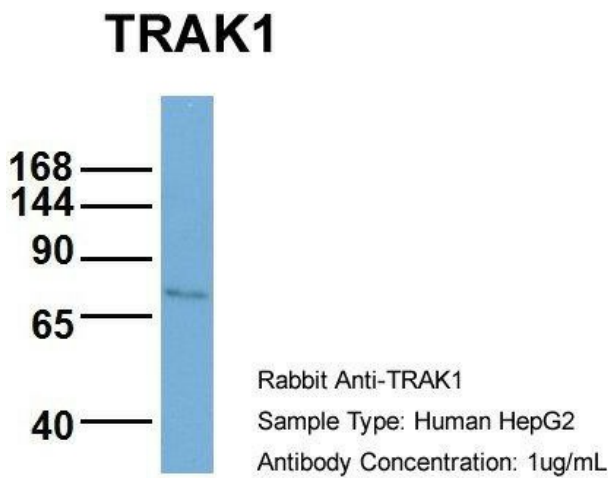


[View online »](#)

Product images:

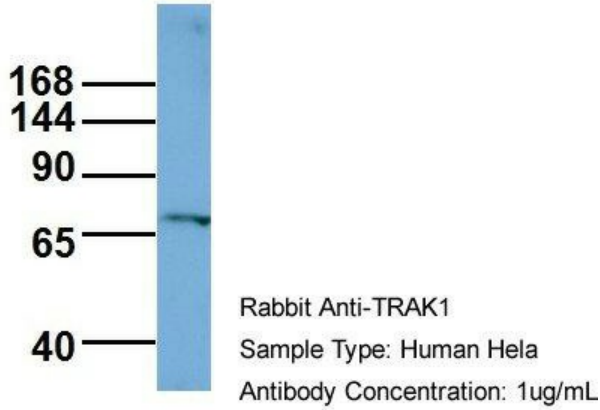


Lanes: Lane 1: 10 ug myc-hTRAK1 transfected HEK293 lysate; Primary Antibody Dilution: 1: 500; Secondary Antibody: Anti-rabbit HRP; Secondary Antibody Dilution: 1: 2000; Gene Name: TRAK1; Submitted by: Gulcin Pekkurnaz, F.M. Kirby Neurobiology Center;



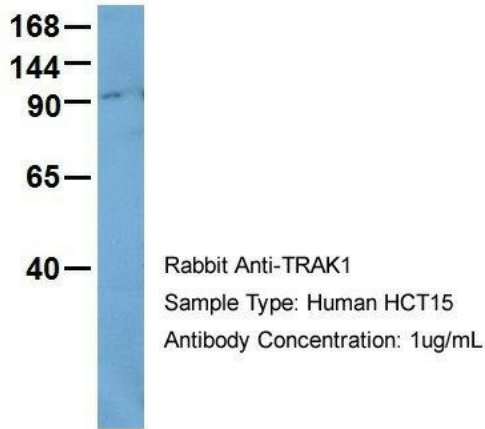
Host: Rabbit; Target Name: TRAK1; Sample Tissue: HepG2; Antibody Dilution: 1.0 ug/ml; TRAK1 is strongly supported by BioGPS gene expression data to be expressed in Human HepG2 cells

## TRAK1

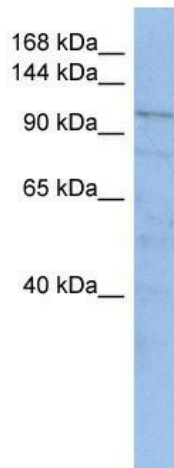


Host: Rabbit; Target Name: TRAK1; Sample Tissue: HeLa; Antibody Dilution: 1.0 ug/ml; TRAK1 is supported by BioGPS gene expression data to be expressed in HeLa

## TRAK1



Host: Rabbit; Target Name: TRAK1; Sample Tissue: HT1080; Antibody Dilution: 1.0 ug/ml; There is BioGPS gene expression data showing that TRAK1 is expressed in HT1080



WB Suggested Anti-TRAK1 Antibody Titration: 0.2-1 ug/ml; ELISA Titer: 1: 1562500; Positive Control: HT1080 cell lysate There is BioGPS gene expression data showing that TRAK1 is expressed in HT1080