

Product datasheet for **TA334985**

TRAK1 Rabbit Polyclonal Antibody

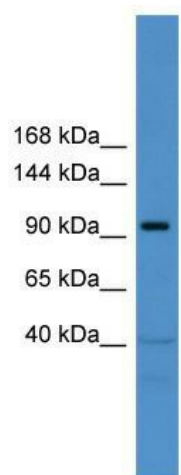
Product data:

Product Type:	Primary Antibodies
Applications:	WB
Recommended Dilution:	WB
Reactivity:	Human
Host:	Rabbit
Isotype:	IgG
Clonality:	Polyclonal
Immunogen:	The immunogen for anti-TRAK1 antibody: synthetic peptide directed towards the middle region of human TRAK1. Synthetic peptide located within the following region: YGYDHDDDLHTPLISPDANIDLTEQIEETLKYFLLCAERVGQMTKTYN
Formulation:	Liquid. Purified antibody supplied in 1x PBS buffer with 0.09% (w/v) sodium azide and 2% sucrose. <i>Note that this product is shipped as lyophilized powder to China customers.</i>
Purification:	Affinity Purified
Conjugation:	Unconjugated
Storage:	Store at -20°C as received.
Stability:	Stable for 12 months from date of receipt.
Predicted Protein Size:	106 kDa
Gene Name:	trafficking kinesin protein 1
Database Link:	NP_001036111 Entrez Gene 22906 Human Q9UPV9
Background:	The specific function of the protein remains unknown.
Synonyms:	MILT1; OIP106
Note:	Immunogen Sequence Homology: Dog: 100%; Pig: 100%; Rat: 100%; Horse: 100%; Human: 100%; Mouse: 100%; Rabbit: 100%; Bovine: 93%; Zebrafish: 86%; Guinea pig: 86%; Yeast: 79%
Protein Families:	Transcription Factors



[View online »](#)

Product images:



WB Suggested Anti-TRAK1 Antibody Titration: 0.2-1 ug/ml; ELISA Titer: 1: 62500; Positive Control: HT1080 cell lysate. There is BioGPS gene expression data showing that TRAK1 is expressed in HT1080.