

Product datasheet for **TA334984**

PCDH17 Rabbit Polyclonal Antibody

Product data:

Product Type:	Primary Antibodies
Applications:	WB
Recommended Dilution:	WB
Reactivity:	Human
Host:	Rabbit
Isotype:	IgG
Clonality:	Polyclonal
Immunogen:	The immunogen for anti-PCDH17 antibody: synthetic peptide directed towards the C terminal of human PCDH17. Synthetic peptide located within the following region: SEMGAVLEQLDHPNRDLGRESVDAEEVVREIDKLLQDCRGNDPVAVRK
Formulation:	Liquid. Purified antibody supplied in 1x PBS buffer with 0.09% (w/v) sodium azide and 2% sucrose. <i>Note that this product is shipped as lyophilized powder to China customers.</i>
Purification:	Affinity Purified
Conjugation:	Unconjugated
Storage:	Store at -20°C as received.
Stability:	Stable for 12 months from date of receipt.
Predicted Protein Size:	124 kDa
Gene Name:	protocadherin 17
Database Link:	NP_001035519 Entrez Gene 27253 Human O14917



[View online »](#)

Background:

PCDH17 contains six extracellular cadherin domains, a transmembrane domain, and a cytoplasmic tail differing from those of the classical cadherins. It may play a role in the establishment and function of specific cell-cell connections in the brain. This gene belongs to the protocadherin gene family, a subfamily of the cadherin superfamily. The encoded protein contains six extracellular cadherin domains, a transmembrane domain, and a cytoplasmic tail differing from those of the classical cadherins. The encoded protein may play a role in the establishment and function of specific cell-cell connections in the brain.

PRIMARYREFSEQ_SPAN PRIMARY_IDENTIFIER PRIMARY_SPAN COMP 1-866 AL445288.9 90051-90916 867-4389 BC028165.1 1-3523 4390-8009 AL445216.6 89335-92954

Synonyms:

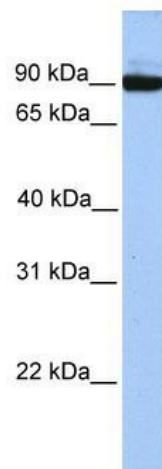
PCDH68; PCH68

Note:

Immunogen Sequence Homology: Dog: 100%; Pig: 100%; Rat: 100%; Horse: 100%; Human: 100%; Mouse: 100%; Rabbit: 100%; Guinea pig: 100%; Bovine: 86%

Protein Families:

Druggable Genome

Product images:

WB Suggested Anti-PCDH17 Antibody Titration:
0.2-1 ug/ml; Positive Control: HepG2 cell lysate