

Product datasheet for **TA334983**

HAGH Rabbit Polyclonal Antibody

Product data:

Product Type:	Primary Antibodies
Applications:	WB
Recommended Dilution:	WB
Reactivity:	Human
Host:	Rabbit
Isotype:	IgG
Clonality:	Polyclonal
Immunogen:	The immunogen for anti-HAGH antibody: synthetic peptide directed towards the C terminal of human HAGH. Synthetic peptide located within the following region: STLAEFTYNPFMRVREKTVQQHAGETDPVTTMRAVRREKDKMPRD
Formulation:	Liquid. Purified antibody supplied in 1x PBS buffer with 0.09% (w/v) sodium azide and 2% sucrose. <i>Note that this product is shipped as lyophilized powder to China customers.</i>
Purification:	Affinity Purified
Conjugation:	Unconjugated
Storage:	Store at -20°C as received.
Stability:	Stable for 12 months from date of receipt.
Predicted Protein Size:	29 kDa
Gene Name:	hydroxyacylglutathione hydrolase
Database Link:	NP_001035517 Entrez Gene 3029 Human Q16775
Background:	HAGH belongs to the metallo-beta-lactamase superfamily, glyoxalase II family. It is classified as a thiolesterase and is responsible for the hydrolysis of S-lactoyl-glutathione to reduced glutathione and D-lactate. The enzyme encoded by this gene is classified as a thiolesterase and is responsible for the hydrolysis of S-lactoyl-glutathione to reduced glutathione and D-lactate.
Synonyms:	GLO2; GLX2; GLXII; HAGH1



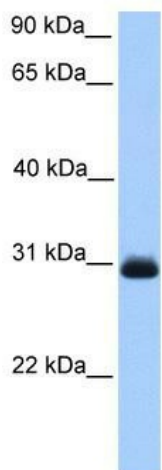
[View online »](#)

Note: Immunogen Sequence Homology: Dog: 100%; Pig: 100%; Horse: 100%; Human: 100%; Mouse: 100%; Bovine: 100%; Guinea pig: 100%; Rat: 93%

Protein Families: Druggable Genome

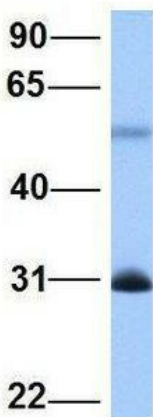
Protein Pathways: Pyruvate metabolism

Product images:



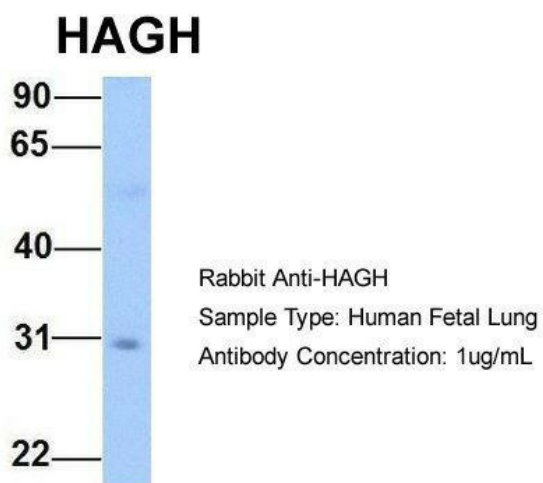
WB Suggested Anti-HAGH Antibody Titration: 0.2-1 ug/ml; Positive Control: Human Liver

HAGH



Rabbit Anti-HAGH
 Sample Type: Human Fetal Heart
 Antibody Concentration: 1ug/mL

Host: Rabbit; Target Name: HAGH; Sample Tissue: Human Fetal Heart; Antibody Dilution: 1.0 ug/ml



Host: Rabbit; Target Name: HAGH; Sample
Tissue: Human Fetal Lung; Antibody Dilution: 1.0
ug/ml