

## Product datasheet for **TA334982**

### HAGH Rabbit Polyclonal Antibody

#### Product data:

Product Type:	Primary Antibodies
Applications:	WB
Recommended Dilution:	WB
Reactivity:	Human
Host:	Rabbit
Isotype:	IgG
Clonality:	Polyclonal
Immunogen:	The immunogen for anti-HAGH antibody: synthetic peptide directed towards the C terminal of human HAGH. Synthetic peptide located within the following region: FARHVEPGNAAIREKLAWAKEKYSIGEPTVPSTLAEFTYNPFMRVREKT
Formulation:	Liquid. Purified antibody supplied in 1x PBS buffer with 0.09% (w/v) sodium azide and 2% sucrose. <i>Note that this product is shipped as lyophilized powder to China customers.</i>
Purification:	Affinity Purified
Conjugation:	Unconjugated
Storage:	Store at -20°C as received.
Stability:	Stable for 12 months from date of receipt.
Predicted Protein Size:	29 kDa
Gene Name:	hydroxyacylglutathione hydrolase
Database Link:	<a href="#">NP_001035517</a> <a href="#">Entrez Gene 3029 Human</a> <a href="#">Q16775</a>
Background:	HAGH is classified as a thiolesterase and is responsible for the hydrolysis of S-lactoyl-glutathione to reduced glutathione and D-lactate. The enzyme encoded by this gene is classified as a thiolesterase and is responsible for the hydrolysis of S-lactoyl-glutathione to reduced glutathione and D-lactate.
Synonyms:	GLO2; GLX2; GLXII; HAGH1



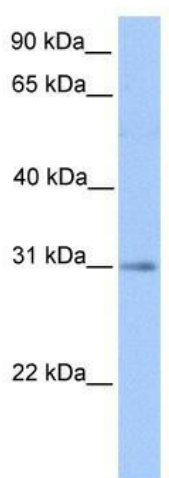
[View online »](#)

**Note:** Immunogen Sequence Homology: Dog: 100%; Horse: 100%; Human: 100%; Bovine: 100%; Mouse: 93%; Pig: 86%; Rat: 86%; Guinea pig: 86%; Zebrafish: 79%

**Protein Families:** Druggable Genome

**Protein Pathways:** Pyruvate metabolism

**Product images:**



WB Suggested Anti-HAGH Antibody Titration: 0.2-1 ug/ml; Positive Control: Human Liver