

Product datasheet for **TA334979**

Fam133b Rabbit Polyclonal Antibody

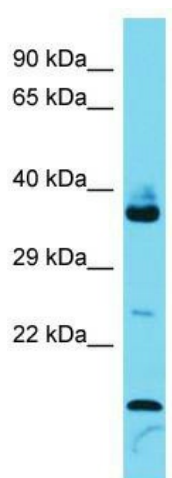
Product data:

Product Type:	Primary Antibodies
Applications:	WB
Recommended Dilution:	WB
Reactivity:	Mouse
Host:	Rabbit
Isotype:	IgG
Clonality:	Polyclonal
Immunogen:	The immunogen for anti-Fam133b antibody is synthetic peptide directed towards the middle region of Mouse Fam133b. Synthetic peptide located within the following region: SGRYSSSSSSSDSSSSSDSEDEDKKQTKRRKKKSRCHKSPESGSDS
Formulation:	Liquid. Purified antibody supplied in 1x PBS buffer with 0.09% (w/v) sodium azide and 2% sucrose.
Purification:	Affinity Purified
Conjugation:	Unconjugated
Storage:	Store at -20°C as received.
Stability:	Stable for 12 months from date of receipt.
Predicted Protein Size:	28 kDa
Gene Name:	family with sequence similarity 133, member B
Database Link:	NP_001035966 Entrez Gene 68152 Mouse Q9CVI2
Background:	The function of this protein remains unknown.
Synonyms:	MGC40405; OTTHUMP00000208822; OTTHUMP00000208865; OTTHUMP00000208866
Note:	Immunogen Sequence Homology: Pig: 100%; Human: 100%; Zebrafish: 100%; Mouse: 93%; Dog: 92%; Horse: 92%; Bovine: 92%; Rat: 86%; Guinea pig: 86%; Yeast: 79%; Rabbit: 79%



[View online »](#)

Product images:



Host: Rabbit; Target Name: Fam133b; Sample
Tissue: Mouse Thymus lysates; Antibody Dilution:
1.0 ug/ml