

Product datasheet for **TA334978**

KLHL35 Rabbit Polyclonal Antibody

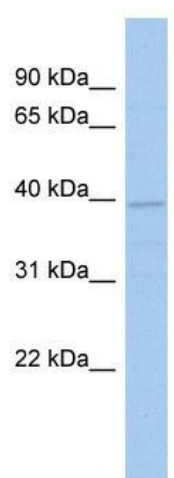
Product data:

Product Type:	Primary Antibodies
Applications:	WB
Recommended Dilution:	WB
Reactivity:	Human
Host:	Rabbit
Isotype:	IgG
Clonality:	Polyclonal
Immunogen:	The immunogen for anti-KLHL35 antibody: synthetic peptide directed towards the N terminal of human KLHL35. Synthetic peptide located within the following region: RPRRFMDLAEVIVVIGGCDRKGLLKLPFADAYHPESQRWTPLPSLPGYTR
Formulation:	Liquid. Purified antibody supplied in 1x PBS buffer with 0.09% (w/v) sodium azide and 2% sucrose. <i>Note that this product is shipped as lyophilized powder to China customers.</i>
Purification:	Affinity Purified
Conjugation:	Unconjugated
Storage:	Store at -20°C as received.
Stability:	Stable for 12 months from date of receipt.
Predicted Protein Size:	40 kDa
Gene Name:	kelch like family member 35
Database Link:	NP_001034637 Entrez Gene 283212 Human Q6PF15
Background:	The specific function of this protein remains unknown.
Synonyms:	26597; DKFZp566C0546; FLJ33790
Note:	Immunogen Sequence Homology: Pig: 100%; Rat: 100%; Human: 100%; Mouse: 100%; Guinea pig: 100%; Horse: 93%; Rabbit: 93%; Dog: 86%; Bovine: 86%



[View online »](#)

Product images:



WB Suggested Anti-KLHL35 Antibody Titration:
0.2-1 ug/ml; ELISA Titer: 1: 312500; Positive
Control: Human kidney