

Product datasheet for TA334975

MPEG1 Rabbit Polyclonal Antibody

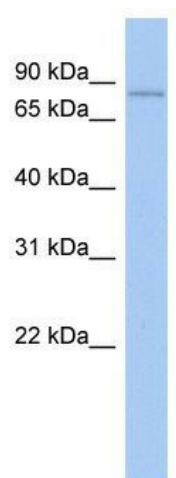
Product data:

Product Type:	Primary Antibodies
Applications:	WB
Recommended Dilution:	WB
Reactivity:	Human
Host:	Rabbit
Isotype:	IgG
Clonality:	Polyclonal
Immunogen:	The immunogen for anti-MPEG1 antibody: synthetic peptide directed towards the middle region of human MPEG1. Synthetic peptide located within the following region: TILAVITLAIYGTRKFKKKAYQAIEERQSLVPGTAATGDDTTYQEQGQSP
Formulation:	Liquid. Purified antibody supplied in 1x PBS buffer with 0.09% (w/v) sodium azide and 2% sucrose.
Purification:	Affinity Purified
Conjugation:	Unconjugated
Storage:	Store at -20°C as received.
Stability:	Stable for 12 months from date of receipt.
Predicted Protein Size:	78 kDa
Gene Name:	macrophage expressed 1
Database Link:	NP_001034485 Entrez Gene 219972 Human Q2M385
Background:	The specific function of this protein remains unknown.
Synonyms:	Mpg-1; MPG1; MPS1
Note:	Immunogen Sequence Homology: Human: 100%
Protein Families:	Transmembrane



[View online »](#)

Product images:



WB Suggested Anti-MPEG1 Antibody Titration:
0.2-1 ug/ml; ELISA Titer: 1: 62500; Positive
Control: Human Spleen