

Product datasheet for **TA334974**

PRAMEF10 Rabbit Polyclonal Antibody

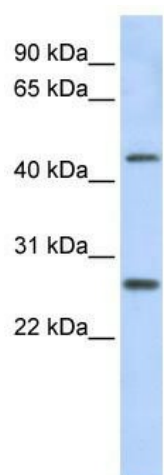
Product data:

Product Type:	Primary Antibodies
Applications:	WB
Recommended Dilution:	WB
Reactivity:	Human
Host:	Rabbit
Isotype:	IgG
Clonality:	Polyclonal
Immunogen:	The immunogen for anti-PRAMEF10 antibody: synthetic peptide directed towards the middle region of human PRAMEF10. Synthetic peptide located within the following region: DLLRHTGGLSKLGLLELYPAPLES LDYKGHVNWEILTPIRAELMRTLREVR
Formulation:	Liquid. Purified antibody supplied in 1x PBS buffer with 0.09% (w/v) sodium azide and 2% sucrose. <i>Note that this product is shipped as lyophilized powder to China customers.</i>
Purification:	Affinity Purified
Conjugation:	Unconjugated
Storage:	Store at -20°C as received.
Stability:	Stable for 12 months from date of receipt.
Predicted Protein Size:	55 kDa
Gene Name:	PRAME family member 10
Database Link:	NP_001034450 Entrez Gene 343071 Human O60809
Background:	PRAMEF10 belongs to the PRAME family. It contains 3 LRR (leucine-rich) repeats. The function of the PRAMEF10 protein remains unknown.
Synonyms:	RP5-845O24.7
Note:	Immunogen Sequence Homology: Human: 100%; Rabbit: 100%



[View online »](#)

Product images:



WB Suggested Anti-PRAMEF10 Antibody Titration:
0.2-1 ug/ml; ELISA Titer: 1: 1562500; Positive
Control: Human brain