

Product datasheet for **TA334973**

NARF Rabbit Polyclonal Antibody

Product data:

Product Type:	Primary Antibodies
Applications:	WB
Recommended Dilution:	WB
Reactivity:	Human
Host:	Rabbit
Isotype:	IgG
Clonality:	Polyclonal
Immunogen:	The immunogen for anti-NARF antibody: synthetic peptide directed towards the middle region of human NARF. Synthetic peptide located within the following region: RGQAQTPDGHADKALLRQMEGIYADIPVRRPESSAHVQELYQEWLEGINS
Formulation:	Liquid. Purified antibody supplied in 1x PBS buffer with 0.09% (w/v) sodium azide and 2% sucrose. <i>Note that this product is shipped as lyophilized powder to China customers.</i>
Purification:	Affinity Purified
Conjugation:	Unconjugated
Storage:	Store at -20°C as received.
Stability:	Stable for 12 months from date of receipt.
Predicted Protein Size:	45 kDa
Gene Name:	nuclear prelamin A recognition factor
Database Link:	NP_001033707 Entrez Gene 26502 Human Q9UHQ1



[View online »](#)

Background:

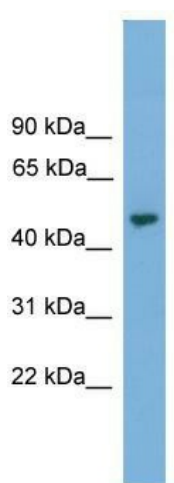
Several proteins have been found to be prenylated and methylated at their carboxyl-terminal ends. Prenylation was initially believed to be important only for membrane attachment. However, another role for prenylation appears to be its importance in protein-protein interactions. The only nuclear proteins known to be prenylated in mammalian cells are prelamin A- and B-type lamins. Prelamin A is farnesylated and carboxymethylated on the cysteine residue of a carboxyl-terminal CaaX motif. This post-translationally modified cysteine residue is removed from prelamin A when it is endoproteolytically processed into mature lamin A. NARF binds to the prenylated prelamin A carboxyl-terminal tail domain. It may be a component of a prelamin A endoprotease complex. NARF is located in the nucleus, where it partially colocalizes with the nuclear lamina. It shares limited sequence similarity with iron-only bacterial hydrogenases.

Synonyms:

IOP2

Note:

Immunogen Sequence Homology: Dog: 100%; Rat: 100%; Human: 100%; Pig: 92%; Mouse: 92%; Guinea pig: 92%; Horse: 85%; Bovine: 85%; Rabbit: 85%

Product images:

WB Suggested Anti-NARF Antibody Titration: 0.2-1 ug/ml; ELISA Titer: 1: 1562500; Positive Control: Human Liver