

Product datasheet for **TA334971**

STARD7-AS1 Rabbit Polyclonal Antibody

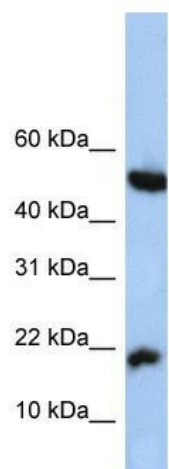
Product data:

Product Type:	Primary Antibodies
Applications:	WB
Recommended Dilution:	WB
Reactivity:	Human
Host:	Rabbit
Isotype:	IgG
Clonality:	Polyclonal
Immunogen:	The immunogen for anti-LOC285033 antibody: synthetic peptide directed towards the N terminal of human LOC285033. Synthetic peptide located within the following region: VKEGAVCGIARPKTSRVNSSQDQIQVASENTHSGSLHQRPASGARLPAS
Formulation:	Liquid. Purified antibody supplied in 1x PBS buffer with 0.09% (w/v) sodium azide and 2% sucrose. <i>Note that this product is shipped as lyophilized powder to China customers.</i>
Purification:	Affinity Purified
Conjugation:	Unconjugated
Storage:	Store at -20°C as received.
Stability:	Stable for 12 months from date of receipt.
Predicted Protein Size:	13 kDa
Gene Name:	STARD7 antisense RNA 1
Database Link:	NP_001032305 Entrez Gene 285033 Human
Background:	The exact function of LOC285033 remains unknown.
Synonyms:	MGC126779; MGC126781
Note:	Immunogen Sequence Homology: Human: 100%



[View online »](#)

Product images:



WB Suggested Anti-LOC285033 Antibody
Titration: 0.2-1 ug/ml; Positive Control: HepG2 cell
lysate