

Product datasheet for **TA334966**

AMD1 Rabbit Polyclonal Antibody

Product data:

Product Type:	Primary Antibodies
Applications:	WB
Recommended Dilution:	WB
Reactivity:	Human
Host:	Rabbit
Isotype:	IgG
Clonality:	Polyclonal
Immunogen:	The immunogen for anti-AMD1 antibody: synthetic peptide directed towards the N terminal of human AMD1. Synthetic peptide located within the following region: MGRMNSDCWYLYTLDFPESRVISQPDQTLEILMSELDPAVMDQFYMKDGV
Formulation:	Liquid. Purified antibody supplied in 1x PBS buffer with 0.09% (w/v) sodium azide and 2% sucrose. <i>Note that this product is shipped as lyophilized powder to China customers.</i>
Purification:	Affinity Purified
Conjugation:	Unconjugated
Storage:	Store at -20°C as received.
Stability:	Stable for 12 months from date of receipt.
Predicted Protein Size:	21 kDa
Gene Name:	adenosylmethionine decarboxylase 1
Database Link:	NP_001028231 Entrez Gene 262 Human P17707
Background:	The specific function of AMD1 is not yet known. This gene encodes an important intermediate enzyme in polyamine biosynthesis. The polyamines spermine, spermidine, and putrescine are low-molecular-weight aliphatic amines essential for cellular proliferation and tumor promotion. Two alternatively spliced transcript variants that encode different proteins have been identified.
Synonyms:	ADOMETDC; AMD; SAMDC



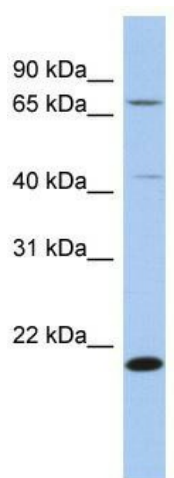
[View online »](#)

Note: Immunogen Sequence Homology: Pig: 100%; Rat: 100%; Horse: 100%; Human: 100%; Mouse: 100%; Guinea pig: 100%; Dog: 93%; Bovine: 93%; Rabbit: 93%

Protein Families: Druggable Genome

Protein Pathways: Arginine and proline metabolism, Cysteine and methionine metabolism, Metabolic pathways

Product images:



WB Suggested Anti-AMD1 Antibody Titration: 0.2-1 ug/ml; ELISA Titer: 1: 312500; Positive Control: THP-1 cell lysate