

## Product datasheet for **TA334965**

### **NALP1 (NLRP1) Rabbit Polyclonal Antibody**

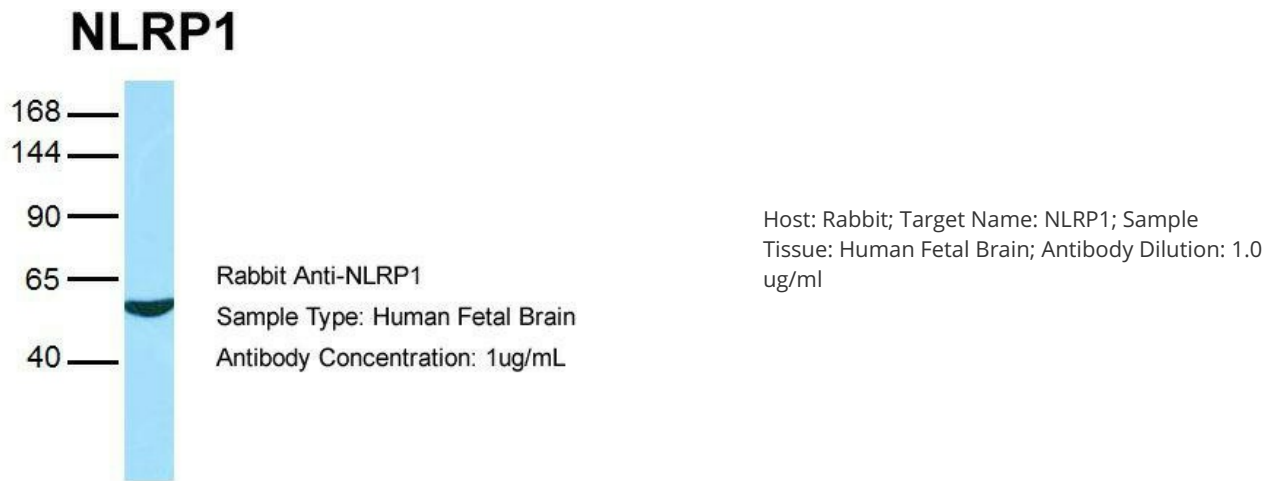
#### **Product data:**

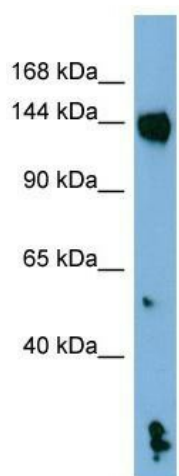
<b>Product Type:</b>	Primary Antibodies
<b>Applications:</b>	WB
<b>Recommended Dilution:</b>	WB
<b>Reactivity:</b>	Human
<b>Host:</b>	Rabbit
<b>Isotype:</b>	IgG
<b>Clonality:</b>	Polyclonal
<b>Immunogen:</b>	The immunogen for anti-NLRP1 antibody: synthetic peptide directed towards the N terminal of human NLRP1. Synthetic peptide located within the following region: DTQEPRIVILQGAAGIGKSTLARQVKEAWGRGQLYGDRFQHVYFSCREL
<b>Formulation:</b>	Liquid. Purified antibody supplied in 1x PBS buffer with 0.09% (w/v) sodium azide and 2% sucrose. <i>Note that this product is shipped as lyophilized powder to China customers.</i>
<b>Purification:</b>	Affinity Purified
<b>Conjugation:</b>	Unconjugated
<b>Storage:</b>	Store at -20°C as received.
<b>Stability:</b>	Stable for 12 months from date of receipt.
<b>Predicted Protein Size:</b>	155 kDa
<b>Gene Name:</b>	NLR family, pyrin domain containing 1
<b>Database Link:</b>	<a href="#">NP_001028225</a> <a href="#">Entrez Gene 22861 Human</a> <a href="#">Q9C000</a>



[View online »](#)

<b>Background:</b>	This gene encodes a member of the Ced-4 family of apoptosis proteins. Ced-family members contain a caspase recruitment domain (CARD) and are known to be key mediators of programmed cell death. The encoded protein contains a distinct N-terminal pyrin-like motif, which is possibly involved in protein-protein interactions. This protein interacts strongly with caspase 2 and weakly with caspase 9. Overexpression of this gene was demonstrated to induce apoptosis in cells. Multiple alternatively spliced transcript variants encoding distinct isoforms have been found for this gene, but the biological validity of some variants has not been determined. [provided by RefSeq, Jul 2008]
<b>Synonyms:</b>	CARD7; CIDED; CLR17.1; DEFCAP; DEFCAP-L; NAC; NALP1; PP1044; S; SLEV1; VAMAS1
<b>Note:</b>	Immunogen Sequence Homology: Rat: 100%; Human: 100%; Mouse: 93%; Dog: 86%; Pig: 86%; Horse: 85%; Bovine: 85%; Rabbit: 85%; Guinea pig: 85%
<b>Protein Families:</b>	Druggable Genome
<b>Protein Pathways:</b>	NOD-like receptor signaling pathway

**Product images:**



WB Suggested Anti-NLRP1 Antibody Titration: 0.2-1 ug/ml; ELISA Titer: 1: 62500; Positive Control: NCI-H226 cell lysate. NLRP1 is strongly supported by BioGPS gene expression data to be expressed in NCI-H226