

Product datasheet for **TA334963**

SUNC1 (SUN3) Rabbit Polyclonal Antibody

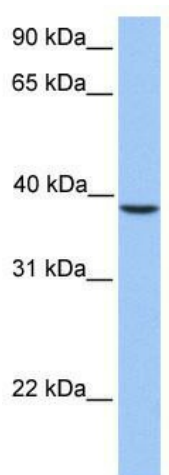
Product data:

Product Type:	Primary Antibodies
Applications:	WB
Recommended Dilution:	WB
Reactivity:	Human
Host:	Rabbit
Isotype:	IgG
Clonality:	Polyclonal
Immunogen:	The immunogen for anti-SUN3 antibody: synthetic peptide directed towards the C terminal of human SUN3. Synthetic peptide located within the following region: IKLATKIPTAVTMEHISEKVSPSGNISSAPKEFSVYGITKKCEGEEIFL
Formulation:	Liquid. Purified antibody supplied in 1x PBS buffer with 0.09% (w/v) sodium azide and 2% sucrose. <i>Note that this product is shipped as lyophilized powder to China customers.</i>
Purification:	Affinity Purified
Conjugation:	Unconjugated
Storage:	Store at -20°C as received.
Stability:	Stable for 12 months from date of receipt.
Predicted Protein Size:	40 kDa
Gene Name:	Sad1 and UNC84 domain containing 3
Database Link:	NP_001025190 Entrez Gene 256979 Human Q8TAQ9
Background:	SUN3 is a single-pass membrane protein. It contains 1 Unc84 (SUN) domain.
Synonyms:	SUNC1
Note:	Immunogen Sequence Homology: Dog: 100%; Pig: 100%; Rat: 100%; Human: 100%; Mouse: 100%; Bovine: 100%; Rabbit: 100%; Zebrafish: 100%; Guinea pig: 100%; Horse: 93%



[View online »](#)

Product images:



WB Suggested Anti-SUN3 Antibody Titration: 0.2-1 ug/ml; Positive Control: HepG2 cell lysate