

Product datasheet for **TA334962**

WDR21B (DCAF4L1) Rabbit Polyclonal Antibody

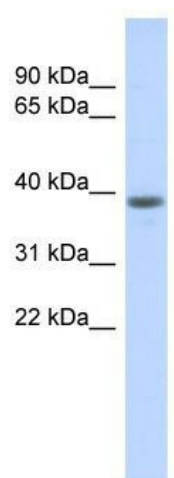
Product data:

Product Type:	Primary Antibodies
Applications:	WB
Recommended Dilution:	WB
Reactivity:	Human
Host:	Rabbit
Isotype:	IgG
Clonality:	Polyclonal
Immunogen:	The immunogen for anti-DCAF4L1 antibody: synthetic peptide directed towards the middle region of human DCAF4L1. Synthetic peptide located within the following region: HEEEGIVVAVGQDCYTRIWSLHDAHLLRTIPSPYASEDDIPSVAFASRL
Formulation:	Liquid. Purified antibody supplied in 1x PBS buffer with 0.09% (w/v) sodium azide and 2% sucrose. <i>Note that this product is shipped as lyophilized powder to China customers.</i>
Purification:	Affinity Purified
Conjugation:	Unconjugated
Storage:	Store at -20°C as received.
Stability:	Stable for 12 months from date of receipt.
Predicted Protein Size:	44 kDa
Gene Name:	DDB1 and CUL4 associated factor 4-like 1
Database Link:	NP_001025126 Entrez Gene 285429 Human Q3SXM0
Background:	The specific function of DCAF4L1 is not yet known.
Synonyms:	WDR21B
Note:	Immunogen Sequence Homology: Human: 100%



[View online »](#)

Product images:



WB Suggested Anti-DCAF4L1 Antibody Titration:
0.2-1 ug/ml; ELISA Titer: 1: 62500; Positive
Control: Human Placenta