

Product datasheet for TA334961

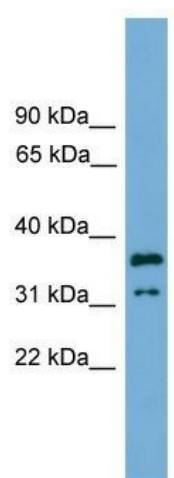
KCTD21 Rabbit Polyclonal Antibody

Product data:

Product Type:	Primary Antibodies
Applications:	WB
Recommended Dilution:	WB
Reactivity:	Human
Host:	Rabbit
Isotype:	IgG
Clonality:	Polyclonal
Immunogen:	The immunogen for anti-KCTD21 antibody: synthetic peptide directed towards the middle region of human KCTD21. Synthetic peptide located within the following region: VFNANIFSTSLFLKLLGSKLFYCSNGNLSSITSHLQDPNHLTDWVANV
Formulation:	Liquid. Purified antibody supplied in 1x PBS buffer with 0.09% (w/v) sodium azide and 2% sucrose.
Purification:	Affinity Purified
Conjugation:	Unconjugated
Storage:	Store at -20°C as received.
Stability:	Stable for 12 months from date of receipt.
Predicted Protein Size:	30 kDa
Gene Name:	potassium channel tetramerization domain containing 21
Database Link:	NP_001025030 Entrez Gene 283219 Human Q4G0X4
Background:	KCTD21 contains 1 BTB (POZ) domain. The exact function of KCTD21 remains unknown.
Synonyms:	KCASH2
Note:	Immunogen Sequence Homology: Dog: 100%; Pig: 100%; Rat: 100%; Goat: 100%; Horse: 100%; Human: 100%; Mouse: 100%; Bovine: 100%; Rabbit: 100%; Guinea pig: 100%


[View online »](#)

Product images:



WB Suggested Anti-KCTD21 Antibody Titration:
0.2-1 ug/ml; Positive Control: Jurkat cell lysate