

Product datasheet for **TA334959**

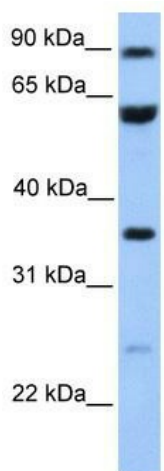
C10orf68 (CCDC7) Rabbit Polyclonal Antibody

Product data:

Product Type:	Primary Antibodies
Applications:	WB
Recommended Dilution:	WB
Reactivity:	Human
Host:	Rabbit
Isotype:	IgG
Clonality:	Polyclonal
Immunogen:	The immunogen for anti-CCDC7 antibody: synthetic peptide directed towards the N terminal of human CCDC7. Synthetic peptide located within the following region: KHNAKLIHDKIEPMVLRSPPTGESILRYALPIPSSKTKNLLPEDEMIGKI
Formulation:	Liquid. Purified antibody supplied in 1x PBS buffer with 0.09% (w/v) sodium azide and 2% sucrose. <i>Note that this product is shipped as lyophilized powder to China customers.</i>
Purification:	Affinity Purified
Conjugation:	Unconjugated
Storage:	Store at -20°C as received.
Stability:	Stable for 12 months from date of receipt.
Predicted Protein Size:	56 kDa
Gene Name:	coiled-coil domain containing 7
Database Link:	NP_001021554 Entrez Gene 79741 Human Q96M83
Background:	The exact function of CCDC7 remains unknown.
Synonyms:	BioT2-A; BioT2-B; BioT2-C; C10orf68
Note:	Immunogen Sequence Homology: Horse: 100%; Human: 100%; Rat: 93%; Rabbit: 93%; Mouse: 92%; Bovine: 86%



[View online »](#)

Product images:

WB Suggested Anti-CCDC7 Antibody Titration:
0.2-1 ug/ml; Positive Control: Jurkat cell lysate