

Product datasheet for **TA334958**

ARHGAP30 Rabbit Polyclonal Antibody

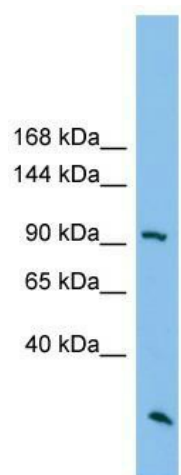
Product data:

Product Type:	Primary Antibodies
Applications:	WB
Recommended Dilution:	WB
Reactivity:	Human
Host:	Rabbit
Isotype:	IgG
Clonality:	Polyclonal
Immunogen:	The immunogen for anti-ARHGAP30 antibody: synthetic peptide directed towards the N terminal of human ARHGAP30. Synthetic peptide located within the following region: RKWRSIFNLGRSGHETKRKLPRGAEDREDKSNKGLRPAKSMDLSLAAAAG
Formulation:	Liquid. Purified antibody supplied in 1x PBS buffer with 0.09% (w/v) sodium azide and 2% sucrose. <i>Note that this product is shipped as lyophilized powder to China customers.</i>
Purification:	Affinity Purified
Conjugation:	Unconjugated
Storage:	Store at -20°C as received.
Stability:	Stable for 12 months from date of receipt.
Predicted Protein Size:	98 kDa
Gene Name:	Rho GTPase activating protein 30
Database Link:	NP_001020769 Entrez Gene 257106 Human Q7Z6I6
Background:	ARHGAP30 is a GTPase activator for the Rho-type GTPases by converting them to an inactive GDP-bound state.
Synonyms:	RP11-544M22.6
Note:	Immunogen Sequence Homology: Pig: 100%; Human: 100%; Guinea pig: 100%; Dog: 93%; Rat: 93%; Horse: 93%; Bovine: 93%; Rabbit: 93%; Mouse: 86%



[View online »](#)

Product images:



WB Suggested Anti-ARHGAP30 Antibody Titration:
0.2-1 ug/ml; ELISA Titer: 1: 62500; Positive
Control: HT1080 cell lysate