

Product datasheet for **TA334957**

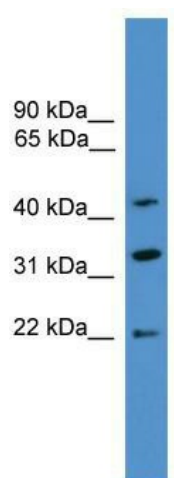
ARFIP1 Rabbit Polyclonal Antibody

Product data:

Product Type:	Primary Antibodies
Applications:	WB
Recommended Dilution:	WB
Reactivity:	Human
Host:	Rabbit
Isotype:	IgG
Clonality:	Polyclonal
Immunogen:	The immunogen for anti-ARFIP1 antibody: synthetic peptide directed towards the C terminal of human ARFIP1. Synthetic peptide located within the following region: NKVKVLHNQLVLFHNAIAAYFAGNQKQLEQLKQFHILKTPGVDAPSWL
Formulation:	Liquid. Purified antibody supplied in 1x PBS buffer with 0.09% (w/v) sodium azide and 2% sucrose. <i>Note that this product is shipped as lyophilized powder to China customers.</i>
Purification:	Affinity Purified
Conjugation:	Unconjugated
Storage:	Store at -20°C as received.
Stability:	Stable for 12 months from date of receipt.
Predicted Protein Size:	42 kDa
Gene Name:	ADP ribosylation factor interacting protein 1
Database Link:	NP_001020766 Entrez Gene 27236 Human P53367
Background:	ARFIP1 is a putative target protein of ADP-ribosylation factor.
Synonyms:	HSU52521
Note:	Immunogen Sequence Homology: Dog: 100%; Pig: 100%; Rat: 100%; Horse: 100%; Human: 100%; Bovine: 100%; Rabbit: 100%; Guinea pig: 100%; Mouse: 93%; Zebrafish: 93%; Sheep: 92%



[View online »](#)

Product images:

WB Suggested Anti-ARFIP1 Antibody Titration:
0.2-1 ug/ml; ELISA Titer: 1: 312500; Positive
Control: 293T cell lysate ARFIP1 is supported by
BioGPS gene expression data to be expressed in
HEK293T