

## Product datasheet for **TA334956**

### ARFIP2 Rabbit Polyclonal Antibody

#### Product data:

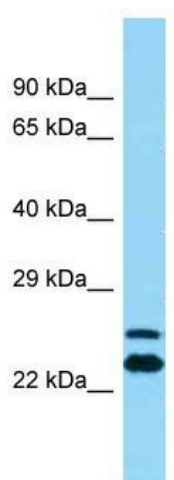
Product Type:	Primary Antibodies
Applications:	WB
Recommended Dilution:	WB
Reactivity:	Human
Host:	Rabbit
Isotype:	IgG
Clonality:	Polyclonal
Immunogen:	The immunogen for anti-ARFIP2 antibody is: synthetic peptide directed towards the middle region of Human ARFIP2. Synthetic peptide located within the following region: CTKQLLSERFGRGSRVTDLELELQIELLRETKRKYESVLQLGRALTAHLY
Formulation:	Liquid. Purified antibody supplied in 1x PBS buffer with 0.09% (w/v) sodium azide and 2% sucrose. <i>Note that this product is shipped as lyophilized powder to China customers.</i>
Purification:	Affinity Purified
Conjugation:	Unconjugated
Storage:	Store at -20°C as received.
Stability:	Stable for 12 months from date of receipt.
Predicted Protein Size:	28 kDa
Gene Name:	ADP ribosylation factor interacting protein 2
Database Link:	<a href="#">NP_001229783</a> <a href="#">Entrez Gene 23647 Human</a> <a href="#">P53365</a>
Background:	ARFIP2 is a putative target protein of ADP-ribosylation factor. It is involved in membrane ruffling.
Synonyms:	POR1
Note:	Immunogen Sequence Homology: Dog: 100%; Pig: 100%; Rat: 100%; Horse: 100%; Human: 100%; Mouse: 100%; Bovine: 100%; Rabbit: 100%; Zebrafish: 100%; Guinea pig: 100%; Sheep: 86%



[View online »](#)

Protein Families: Druggable Genome

### Product images:



Host: Rabbit; Target Name: ARFIP2; Sample Tissue: THP-1 Whole cell lysates; Antibody Dilution: 1.0 ug/ml