

Product datasheet for **TA334954**

Sh3kbp1 Rabbit Polyclonal Antibody

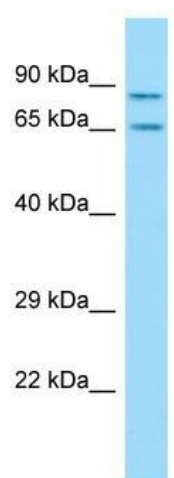
Product data:

Product Type:	Primary Antibodies
Applications:	WB
Recommended Dilution:	WB
Reactivity:	Rat
Host:	Rabbit
Isotype:	IgG
Clonality:	Polyclonal
Immunogen:	The immunogen for anti-Sh3kbp1 antibody is: synthetic peptide directed towards the C-terminal region of Rat Sh3kbp1. Synthetic peptide located within the following region: QSLTSSSLSPDIFDSPSPEEDKEEHISLAHRGIDVSKKTSRTVTISQVS
Formulation:	Liquid. Purified antibody supplied in 1x PBS buffer with 0.09% (w/v) sodium azide and 2% sucrose. <i>Note that this product is shipped as lyophilized powder to China customers.</i>
Purification:	Affinity Purified
Conjugation:	Unconjugated
Storage:	Store at -20°C as received.
Stability:	Stable for 12 months from date of receipt.
Predicted Protein Size:	73 kDa
Gene Name:	SH3 domain-containing kinase-binding protein 1
Database Link:	NP_445812 Entrez Gene 84357 Rat Q925Q9
Background:	Sh3kbp1 binds apoptosis-linked gene 2 (ALG-2) interacting protein 1; involved in regulation of apoptosis in astrocytes.
Synonyms:	CD2BP3; CIN85; GIG10; HSB-1; MIG18
Note:	Immunogen Sequence Homology: Pig: 100%; Rat: 100%; Human: 100%; Mouse: 100%; Rabbit: 100%; Guinea pig: 100%; Dog: 93%; Bovine: 93%; Goat: 80%; Horse: 79%



[View online »](#)

Product images:



WB Suggested Anti-Sh3kbp1 Antibody; Titration:
1.0 ug/ml; Positive Control: Rat Thymus