

Product datasheet for **TA334953**

SH3KBP1 Rabbit Polyclonal Antibody

Product data:

Product Type:	Primary Antibodies
Applications:	WB
Recommended Dilution:	WB
Reactivity:	Human
Host:	Rabbit
Isotype:	IgG
Clonality:	Polyclonal
Immunogen:	The immunogen for anti-SH3KBP1 antibody: synthetic peptide directed towards the N terminal of human SH3KBP1. Synthetic peptide located within the following region: TGMFPSNFIKELSGESDELGISQDEQLSKSSLRETTGSESDGGDSSSTKS
Formulation:	Liquid. Purified antibody supplied in 1x PBS buffer with 0.09% (w/v) sodium azide and 2% sucrose. <i>Note that this product is shipped as lyophilized powder to China customers.</i>
Purification:	Affinity Purified
Conjugation:	Unconjugated
Storage:	Store at -20°C as received.
Stability:	Stable for 12 months from date of receipt.
Predicted Protein Size:	68 kDa
Gene Name:	SH3 domain containing kinase binding protein 1
Database Link:	NP_001019837 Entrez Gene 30011 Human Q96B97
Background:	This gene encodes an adapter protein that contains three N-terminal Src homology domains, a proline rich region and a C-terminal coiled-coil domain. The encoded protein facilitates protein-protein interactions and has been implicated in numerous cellular processes including apoptosis, cytoskeletal rearrangement, cell adhesion and in the regulation of clathrin-dependent endocytosis. Alternate splicing results in multiple transcript variants.
Synonyms:	CD2BP3; CIN85; GIG10; HSB-1; HSB1; MIG18



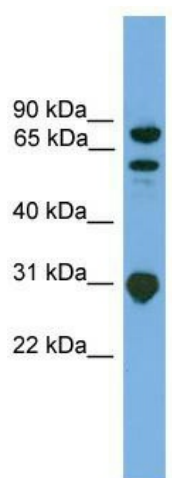
[View online »](#)

Note: Immunogen Sequence Homology: Dog: 100%; Pig: 100%; Rat: 100%; Horse: 100%; Human: 100%; Mouse: 100%; Bovine: 100%; Rabbit: 100%; Guinea pig: 100%; Zebrafish: 85%

Protein Families: Druggable Genome

Protein Pathways: Endocytosis

Product images:



WB Suggested Anti-SH3KBP1 Antibody Titration:
0.2-1 ug/ml; ELISA Titer: 1: 312500; Positive
Control: Jurkat cell lysate