

Product datasheet for **TA334950**

PGBD2 Rabbit Polyclonal Antibody

Product data:

Product Type:	Primary Antibodies
Applications:	WB
Recommended Dilution:	WB
Reactivity:	Human
Host:	Rabbit
Isotype:	IgG
Clonality:	Polyclonal
Immunogen:	The immunogen for anti-PGBD2 antibody: synthetic peptide directed towards the middle region of human PGBD2. Synthetic peptide located within the following region: RICCQDAQVDLLAFRRYIACVYLESNADTTSQGRRSRRLETESRFDMIGH
Formulation:	Liquid. Purified antibody supplied in 1x PBS buffer with 0.09% (w/v) sodium azide and 2% sucrose. <i>Note that this product is shipped as lyophilized powder to China customers.</i>
Purification:	Affinity Purified
Conjugation:	Unconjugated
Storage:	Store at -20°C as received.
Stability:	Stable for 12 months from date of receipt.
Predicted Protein Size:	39 kDa
Gene Name:	piggyBac transposable element derived 2
Database Link:	NP_001017434 Entrez Gene 267002 Human Q6P3X8



[View online »](#)

Background:

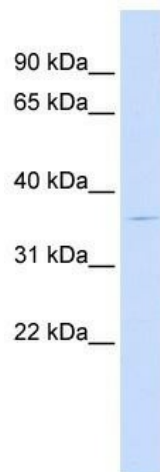
The piggyBac family of proteins, found in diverse animals, are transposases related to the transposase of the canonical piggyBac transposon from the moth, *Trichoplusia ni*. This family also includes genes in several genomes, including human, that appear to have been derived from the piggyBac transposons. This gene belongs to the subfamily of piggyBac transposable element derived (PGBD) genes. The PGBD proteins appear to be novel, with no obvious relationship to other transposases, or other known protein families. The exact function of this gene is not known. The piggyBac family of proteins, found in diverse animals, are transposases related to the transposase of the canonical piggyBac transposon from the moth, *Trichoplusia ni*. This family also includes genes in several genomes, including human, that appear to have been derived from the piggyBac transposons. This gene belongs to the subfamily of piggyBac transposable element derived (PGBD) genes. The PGBD proteins appear to be novel, with no obvious relationship to other transposases, or other known protein families. The exact function of this gene is not known. Two transcript variants encoding different isoforms have been found for this gene.

Synonyms:

PGBD2

Note:

Immunogen Sequence Homology: Human: 100%; Horse: 93%; Bovine: 93%; Rabbit: 93%; Dog: 79%

Product images:


WB Suggested Anti-PGBD2 Antibody Titration:
0.2-1 ug/ml; ELISA Titer: 1: 62500; Positive
Control: Human Liver