

## Product datasheet for **TA334948**

### ETFB Rabbit Polyclonal Antibody

#### Product data:

|                         |   |
|-------------------------|---|
| Product Type:           | Primary Antibodies  |
| Applications:           | WB  |
| Recommended Dilution:   | WB  |
| Reactivity:             | Human   |
| Host:                   | Rabbit  |
| Isotype:                | IgG   |
| Clonality:              | Polyclonal  |
| Immunogen:              | The immunogen for anti-ETFB antibody: synthetic peptide directed towards the C terminal of human ETFB. Synthetic peptide located within the following region:<br>TADLRLNEPRYATLPNIMKAKKKKIEVIKPGDLGVDLTSKLSVISVEDPP |
| Formulation:            | Liquid. Purified antibody supplied in 1x PBS buffer with 0.09% (w/v) sodium azide and 2% sucrose.<br><i>Note that this product is shipped as lyophilized powder to China customers.</i>                             |
| Purification:           | Affinity Purified   |
| Conjugation:            | Unconjugated  |
| Storage:                | Store at -20°C as received.   |
| Stability:              | Stable for 12 months from date of receipt.  |
| Predicted Protein Size: | 28 kDa  |
| Gene Name:              | electron transfer flavoprotein beta subunit   |
| Database Link:          | <a href="#">NP_001976</a><br><a href="#">Entrez Gene 2109 Human</a><br><a href="#">P38117</a>   |



[View online »](#)

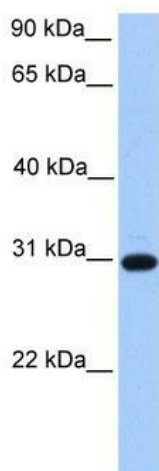
**Background:** ETFB is the electron-transfer-flavoprotein, beta polypeptide, which shuttles electrons between primary flavoprotein dehydrogenases involved in mitochondrial fatty acid and amino acid catabolism and the membrane-bound electron transfer flavoprotein ubiquinone oxidoreductase. The gene deficiencies have been implicated in type II glutaricaciduria. This gene encodes electron-transfer-flavoprotein, beta polypeptide, which shuttles electrons between primary flavoprotein dehydrogenases involved in mitochondrial fatty acid and amino acid catabolism and the membrane-bound electron transfer flavoprotein ubiquinone oxidoreductase. The gene deficiencies have been implicated in type II glutaricaciduria. Alternatively spliced transcript variants have been found for this gene.

**Synonyms:** FP585; MADD

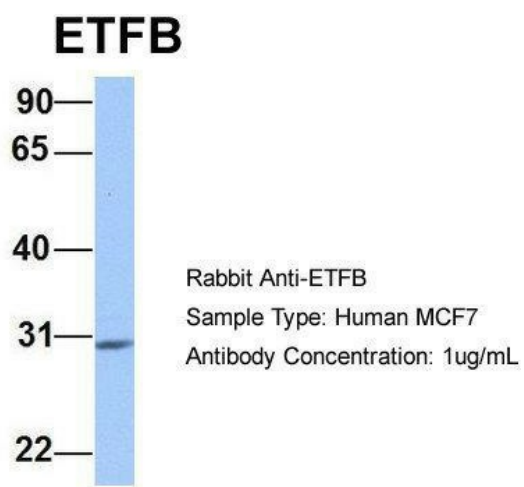
**Note:** Immunogen Sequence Homology: Dog: 100%; Pig: 100%; Rat: 100%; Horse: 100%; Human: 100%; Mouse: 100%; Yeast: 100%; Bovine: 100%; Rabbit: 100%; Guinea pig: 100%

**Protein Families:** Druggable Genome

### Product images:



WB Suggested Anti-ETFB Antibody Titration: 0.2-1 ug/ml; Positive Control: Human heart



Host: Rabbit; Target Name: ETFB; Sample Tissue: Human MCF7; Antibody Dilution: 1.0 ug/ml; ETFB is supported by BioGPS gene expression data to be expressed in MCF7