

## Product datasheet for **TA334947**

### ETFB Rabbit Polyclonal Antibody

#### Product data:

Product Type:	Primary Antibodies
Applications:	WB
Recommended Dilution:	WB
Reactivity:	Human
Host:	Rabbit
Isotype:	IgG
Clonality:	Polyclonal
Immunogen:	The immunogen for anti-ETFB antibody is: synthetic peptide directed towards the C-terminal region of Human ETFB. Synthetic peptide located within the following region: PQGTFFASQVTLEGDKLKVEREIDGGLETLRLKLPVVTADLRLNEPRYAT
Formulation:	Liquid. Purified antibody supplied in 1x PBS buffer with 0.09% (w/v) sodium azide and 2% sucrose. <i>Note that this product is shipped as lyophilized powder to China customers.</i>
Purification:	Affinity Purified
Conjugation:	Unconjugated
Storage:	Store at -20°C as received.
Stability:	Stable for 12 months from date of receipt.
Predicted Protein Size:	28 kDa
Gene Name:	electron transfer flavoprotein beta subunit
Database Link:	<a href="#">NP_001976</a> <a href="#">Entrez Gene 2109 Human</a> <a href="#">P38117</a>
Background:	ETFB is the electron-transfer-flavoprotein, beta polypeptide, which shuttles electrons between primary flavoprotein dehydrogenases involved in mitochondrial fatty acid and amino acid catabolism and the membrane-bound electron transfer flavoprotein ubiquinone oxidoreductase. The gene deficiencies have been implicated in type II glutaricaciduria.
Synonyms:	FP585; MADD

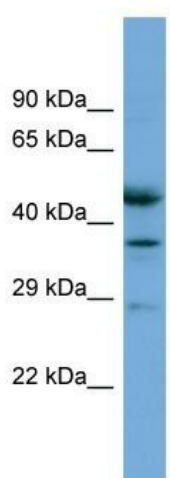


[View online »](#)

**Note:** Immunogen Sequence Homology: Pig: 100%; Rat: 100%; Human: 100%; Guinea pig: 100%; Dog: 93%; Horse: 93%; Mouse: 93%; Bovine: 93%; Zebrafish: 93%; Yeast: 91%; Rabbit: 86%

**Protein Families:** Druggable Genome

### Product images:



Host: Rabbit  
Target Name: ETFB  
Sample Tissue: COLO205 Cell Lysate  
Antibody Dilution: 1.0 $\mu$ g/ml

Host: Rabbit; Target Name: ETFB; Sample Tissue: COLO205 Whole Cell lysates; Antibody Dilution: 1.0 ug/ml