

Product datasheet for **TA334944**

ANXA2R Rabbit Polyclonal Antibody

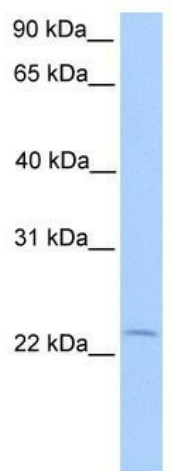
Product data:

Product Type:	Primary Antibodies
Applications:	WB
Recommended Dilution:	WB
Reactivity:	Human
Host:	Rabbit
Isotype:	IgG
Clonality:	Polyclonal
Immunogen:	The immunogen for anti-ANXA2R antibody: synthetic peptide directed towards the N terminal of human ANXA2R. Synthetic peptide located within the following region: EQHFLGCVKRAWDSAEVAPEPQPPPIVSSSEDRGPWPLPLYVVLGEYSLDS
Formulation:	Liquid. Purified antibody supplied in 1x PBS buffer with 0.09% (w/v) sodium azide and 2% sucrose. <i>Note that this product is shipped as lyophilized powder to China customers.</i>
Purification:	Affinity Purified
Conjugation:	Unconjugated
Storage:	Store at -20°C as received.
Stability:	Stable for 12 months from date of receipt.
Predicted Protein Size:	22 kDa
Gene Name:	annexin A2 receptor
Database Link:	NP_001014301 Entrez Gene 389289 Human Q3ZCQ2
Background:	ANXA2R may act as a receptor for annexin II on marrow stromal cells to induce osteoclast formation.
Synonyms:	AX2R; AXIIR; C5orf39
Note:	Immunogen Sequence Homology: Human: 100%
Protein Families:	Druggable Genome



[View online »](#)

Product images:



WB Suggested Anti-ANXA2R Antibody Titration:
0.2-1 ug/ml; Positive Control: Human Placenta