

Product datasheet for **TA334942**

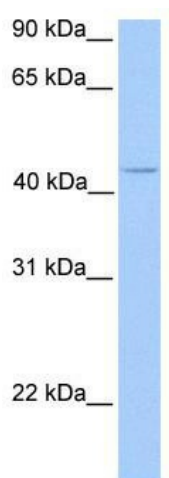
C17orf97 Rabbit Polyclonal Antibody

Product data:

Product Type:	Primary Antibodies
Applications:	WB
Recommended Dilution:	WB
Reactivity:	Human
Host:	Rabbit
Isotype:	IgG
Clonality:	Polyclonal
Immunogen:	The immunogen for anti-C17orf97 antibody: synthetic peptide directed towards the N terminal of human LOC400566. Synthetic peptide located within the following region: VSLPDFAEIENLANRINESLRWDGILADPEAEKERIRIYKLNRRKRYRCL
Formulation:	Liquid. Purified antibody supplied in 1x PBS buffer with 0.09% (w/v) sodium azide and 2% sucrose. <i>Note that this product is shipped as lyophilized powder to China customers.</i>
Purification:	Affinity Purified
Conjugation:	Unconjugated
Storage:	Store at -20°C as received.
Stability:	Stable for 12 months from date of receipt.
Predicted Protein Size:	47 kDa
Gene Name:	chromosome 17 open reading frame 97
Database Link:	NP_001013694 Entrez Gene 400566 Human Q6ZQX7
Background:	The exact function of LOC400566 remains unknown.
Synonyms:	CK20; LIAT1
Note:	Immunogen Sequence Homology: Dog: 100%; Rat: 100%; Human: 100%; Mouse: 100%; Bovine: 100%; Rabbit: 93%; Pig: 86%; Horse: 86%



[View online »](#)

Product images:

WB Suggested Anti-C17orf97 Antibody Titration:
0.2-1 ug/ml; Positive Control: Jurkat cell lysate