

Product datasheet for **TA334940**

C12orf68 (CCDC184) Rabbit Polyclonal Antibody

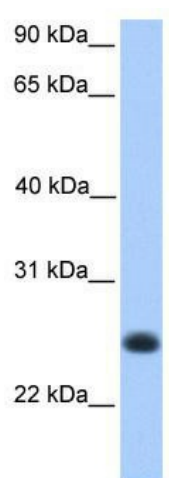
Product data:

Product Type:	Primary Antibodies
Applications:	WB
Recommended Dilution:	WB
Reactivity:	Human
Host:	Rabbit
Isotype:	IgG
Clonality:	Polyclonal
Immunogen:	The immunogen for anti-C12orf68 antibody: synthetic peptide directed towards the middle region of human LOC387856. Synthetic peptide located within the following region: LQALFEDVRAMRGALDEQASHIQVLSDDVCANQRAIVSMCQIMTTAPRQG
Formulation:	Liquid. Purified antibody supplied in 1x PBS buffer with 0.09% (w/v) sodium azide and 2% sucrose. <i>Note that this product is shipped as lyophilized powder to China customers.</i>
Purification:	Affinity Purified
Conjugation:	Unconjugated
Storage:	Store at -20°C as received.
Stability:	Stable for 12 months from date of receipt.
Predicted Protein Size:	20 kDa
Gene Name:	coiled-coil domain containing 184
Database Link:	NP_001013657 Entrez Gene 387856 Human Q52MB2
Background:	The exact function of LOC387856 remains unknown.
Synonyms:	C12orf68
Note:	Immunogen Sequence Homology: Dog: 93%; Pig: 93%; Rat: 93%; Horse: 93%; Human: 93%; Mouse: 93%; Bovine: 93%; Rabbit: 93%; Guinea pig: 93%



[View online »](#)

Product images:



WB Suggested Anti-C12orf68 Antibody Titration:
0.2-1 ug/ml; Positive Control: Human Muscle