

Product datasheet for **TA334937**

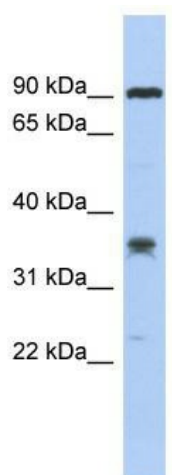
C6ORF154 (LRRC73) Rabbit Polyclonal Antibody

Product data:

Product Type:	Primary Antibodies
Applications:	WB
Recommended Dilution:	WB
Reactivity:	Human
Host:	Rabbit
Isotype:	IgG
Clonality:	Polyclonal
Immunogen:	The immunogen for anti-LRRC73 antibody: synthetic peptide directed towards the middle region of human LRRC73. Synthetic peptide located within the following region: NLDYNPLGDHVAGMLAVAVASSRTLEVLDLEGTGLTNQSAQTLLDMVENY
Formulation:	Liquid. Purified antibody supplied in 1x PBS buffer with 0.09% (w/v) sodium azide and 2% sucrose.
Purification:	Affinity Purified
Conjugation:	Unconjugated
Storage:	Store at -20°C as received.
Stability:	Stable for 12 months from date of receipt.
Predicted Protein Size:	33 kDa
Gene Name:	leucine rich repeat containing 73
Database Link:	NP_001012992 Entrez Gene 221424 Human Q5JTD7
Background:	The specific function of this protein remains unknown.
Synonyms:	C6orf154
Note:	Immunogen Sequence Homology: Dog: 100%; Pig: 100%; Rat: 100%; Goat: 100%; Horse: 100%; Human: 100%; Mouse: 100%; Bovine: 100%; Rabbit: 100%; Zebrafish: 100%; Guinea pig: 100%



[View online »](#)

Product images:

WB Suggested Anti-LRRC73 Antibody Titration:
0.2-1 ug/ml; ELISA Titer: 1: 312500; Positive
Control: COLO205 cell lysate