

Product datasheet for **TA334936**

C6ORF154 (LRRC73) Rabbit Polyclonal Antibody

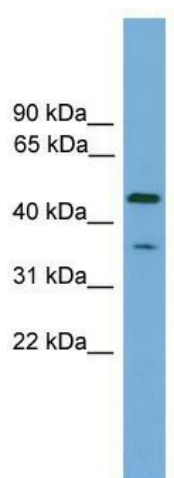
Product data:

Product Type:	Primary Antibodies
Applications:	WB
Recommended Dilution:	WB
Reactivity:	Human
Host:	Rabbit
Isotype:	IgG
Clonality:	Polyclonal
Immunogen:	The immunogen for anti-LRRC73 antibody: synthetic peptide directed towards the N terminal of human LRRC73. Synthetic peptide located within the following region: MLPSSIQISGEPLSGAEVRDICRGLRDNAVRLLSLRGCRLCDRDFGRICR
Formulation:	Liquid. Purified antibody supplied in 1x PBS buffer with 0.09% (w/v) sodium azide and 2% sucrose.
Purification:	Affinity Purified
Conjugation:	Unconjugated
Storage:	Store at -20°C as received.
Stability:	Stable for 12 months from date of receipt.
Predicted Protein Size:	33 kDa
Gene Name:	leucine rich repeat containing 73
Database Link:	NP_001012992 Entrez Gene 221424 Human Q5JTD7
Background:	The function of this protein remains unknown.
Synonyms:	C6orf154
Note:	Immunogen Sequence Homology: Pig: 100%; Rat: 100%; Human: 100%; Mouse: 100%; Bovine: 100%; Rabbit: 100%; Guinea pig: 100%; Goat: 93%; Zebrafish: 85%



[View online »](#)

Product images:



WB Suggested Anti-LRRC73 Antibody Titration:
0.2-1 ug/ml; Positive Control: 293T cell lysate