

Product datasheet for **TA334933**

CENPP Rabbit Polyclonal Antibody

Product data:

Product Type:	Primary Antibodies
Applications:	WB
Recommended Dilution:	WB
Reactivity:	Human
Host:	Rabbit
Isotype:	IgG
Clonality:	Polyclonal
Immunogen:	The immunogen for anti-CENPP antibody: synthetic peptide directed towards the N terminal of human CENPP. Synthetic peptide located within the following region: VQKSFQAIHQFNLEGWKSSKDLKNQLGHLESELSFLSTLTGINIRNHSKQ
Formulation:	Liquid. Purified antibody supplied in 1x PBS buffer with 0.09% (w/v) sodium azide and 2% sucrose.
Purification:	Affinity Purified
Conjugation:	Unconjugated
Storage:	Store at -20°C as received.
Stability:	Stable for 12 months from date of receipt.
Predicted Protein Size:	33 kDa
Gene Name:	centromere protein P
Database Link:	NP_001012267 Entrez Gene 401541 Human Q6IPU0



[View online »](#)

Background:

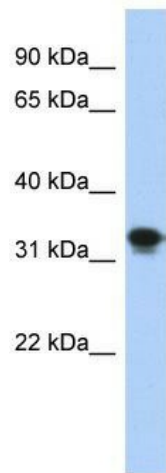
CENPP is the component of the CENPA-CAD (nucleosome distal) complex, a complex recruited to centromeres which is involved in assembly of kinetochore proteins, mitotic progression and chromosome segregation. CENPP may be involved in incorporation of newly synthesized CENPA into centromeres via its interaction with the CENPA-NAC complex. CENPP is a subunit of a CENPH (MIM 605607)-CENPI (MIM 300065)-associated centromeric complex that targets CENPA (MIM 117139) to centromeres and is required for proper kinetochore function and mitotic progression (Okada et al., 2006 [PubMed 16622420]). [supplied by OMIM]. PRIMARYREFSEQ_SPAN PRIMARY_IDENTIFIER PRIMARY_SPAN COMP 1-1104 CR592049.1 1-1104 1105-1633 BC071726.1 622-1150 1634-1689 BX537851.1 972-1027 1690-3411 AK091247.1 839-2560 3412-3428 AL833701.1 3078-3094

Synonyms:

CENP-P

Note:

Immunogen Sequence Homology: Human: 100%; Horse: 77%

Product images:


WB Suggested Anti-CENPP Antibody Titration:
0.2-1 ug/ml; ELISA Titer: 1: 312500; Positive
Control: Transfected 293T