

Product datasheet for **TA334931**

C10ORF132 (GOLGA7B) Rabbit Polyclonal Antibody

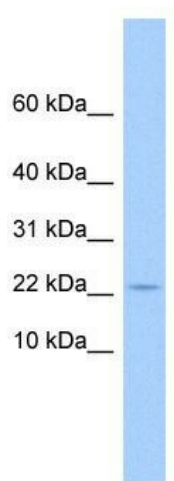
Product data:

Product Type:	Primary Antibodies
Applications:	WB
Recommended Dilution:	WB
Reactivity:	Human
Host:	Rabbit
Isotype:	IgG
Clonality:	Polyclonal
Immunogen:	The immunogen for anti-C10orf132 antibody: synthetic peptide directed towards the N terminal of human C10orf132. Synthetic peptide located within the following region: MATEVHNLQELRRSASLATKVFIQRDYS DGTICQFQTKFPPELDSRIERQ
Formulation:	Liquid. Purified antibody supplied in 1x PBS buffer with 0.09% (w/v) sodium azide and 2% sucrose.
Purification:	Affinity Purified
Conjugation:	Unconjugated
Storage:	Store at -20°C as received.
Stability:	Stable for 12 months from date of receipt.
Predicted Protein Size:	18 kDa
Gene Name:	golgin A7 family member B
Database Link:	NP_001010917 Entrez Gene 401647 Human Q2TAP0
Background:	The exact function of C10orf132 remains unknown.
Synonyms:	bA451M19.3; bA459F3.4; C10orf132; C10orf133



Note: Immunogen Sequence Homology: Dog: 100%; Pig: 100%; Rat: 100%; Horse: 100%; Human: 100%; Mouse: 100%; Bovine: 100%; Rabbit: 100%; Guinea pig: 100%; Zebrafish: 93%

Product images:



WB Suggested Anti-C10orf132 Antibody
Titration: 0.2-1 ug/ml; Positive Control: 721_B
cell lysate