

Product datasheet for **TA334930**

C9orf153 Rabbit Polyclonal Antibody

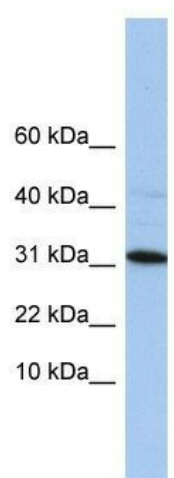
Product data:

Product Type:	Primary Antibodies
Applications:	WB
Recommended Dilution:	WB
Reactivity:	Human
Host:	Rabbit
Isotype:	IgG
Clonality:	Polyclonal
Immunogen:	The immunogen for anti-C9orf153 antibody: synthetic peptide directed towards the middle region of human C9orf153. Synthetic peptide located within the following region: NEAQEVLARNLNVMFSFTRGADVRLQPVISVNMKNKPGKHKRKTSPKIN
Formulation:	Liquid. Purified antibody supplied in 1x PBS buffer with 0.09% (w/v) sodium azide and 2% sucrose. <i>Note that this product is shipped as lyophilized powder to China customers.</i>
Purification:	Affinity Purified
Conjugation:	Unconjugated
Storage:	Store at -20°C as received.
Stability:	Stable for 12 months from date of receipt.
Predicted Protein Size:	29 kDa
Gene Name:	chromosome 9 open reading frame 153
Database Link:	NP_001010907 Entrez Gene 389766 Human Q5TBE3
Background:	The exact function of C9orf153 remains unknown.
Synonyms:	bA507D14.1
Note:	Immunogen Sequence Homology: Human: 100%



[View online »](#)

Product images:



WB Suggested Anti-C9orf153 Antibody Titration:
0.2-1 ug/ml; ELISA Titer: 1: 12500; Positive
Control: HepG2 cell lysate