

## Product datasheet for **TA334928**

### **RAD26L (ERCC6L2) Rabbit Polyclonal Antibody**

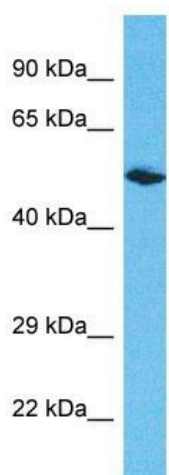
#### **Product data:**

<b>Product Type:</b>	Primary Antibodies
<b>Applications:</b>	WB
<b>Recommended Dilution:</b>	WB
<b>Reactivity:</b>	Human
<b>Host:</b>	Rabbit
<b>Isotype:</b>	IgG
<b>Clonality:</b>	Polyclonal
<b>Immunogen:</b>	The immunogen for anti-ERCC6L2 antibody is: synthetic peptide directed towards the N-terminal region of Human ERCC6L2. Synthetic peptide located within the following region: ELWCVMDWAVPGLLGSGTYFKKQFSDPVEHGQRHTATKRELATGRKAMQR
<b>Formulation:</b>	Liquid. Purified antibody supplied in 1x PBS buffer with 0.09% (w/v) sodium azide and 2% sucrose.
<b>Purification:</b>	Affinity Purified
<b>Conjugation:</b>	Unconjugated
<b>Storage:</b>	Store at -20°C as received.
<b>Stability:</b>	Stable for 12 months from date of receipt.
<b>Predicted Protein Size:</b>	57 kDa
<b>Gene Name:</b>	ERCC excision repair 6 like 2
<b>Database Link:</b>	<a href="#">CAB97543</a> <a href="#">Entrez Gene 375748 Human</a> <a href="#">Q5T890</a>
<b>Background:</b>	The function of this protein remains unknown.
<b>Synonyms:</b>	0610007P08Rik; 1700019D06Rik; 9330134C04Rik; Rad26l; Sr278
<b>Note:</b>	Immunogen Sequence Homology: Dog: 100%; Rat: 100%; Horse: 100%; Human: 100%; Mouse: 100%; Bovine: 100%; Rabbit: 100%; Pig: 93%; Guinea pig: 92%



[View online »](#)

Product images:



Host: Rabbit  
Target Name: RAD26L  
Sample Tissue: Breast Tumor Lysate  
Antibody Dilution: 1.0 $\mu$ g/ml

Host: Rabbit; Target Name: RAD26L; Sample Tissue: Breast Tumor lysates; Antibody Dilution: 1.0 ug/ml