

## Product datasheet for **TA334923**

### NKAPL Rabbit Polyclonal Antibody

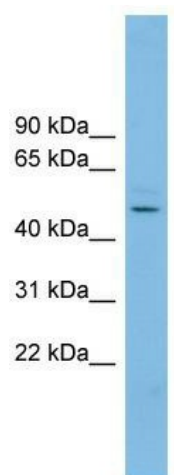
#### Product data:

Product Type:	Primary Antibodies
Applications:	WB
Recommended Dilution:	WB
Reactivity:	Human
Host:	Rabbit
Isotype:	IgG
Clonality:	Polyclonal
Immunogen:	The immunogen for anti-NKAPL antibody: synthetic peptide directed towards the middle region of human NKAPL. Synthetic peptide located within the following region: KTSRSRNKKKRKNKSSKRKHKRKYSDSDSNSESDTNSDSDDDKKRVKAKKK
Formulation:	Liquid. Purified antibody supplied in 1x PBS buffer with 0.09% (w/v) sodium azide and 2% sucrose. <i>Note that this product is shipped as lyophilized powder to China customers.</i>
Purification:	Affinity Purified
Conjugation:	Unconjugated
Storage:	Store at -20°C as received.
Stability:	Stable for 12 months from date of receipt.
Predicted Protein Size:	46 kDa
Gene Name:	NFKB activating protein like
Database Link:	<a href="#">NP_001007532</a> <a href="#">Entrez Gene 222698 Human</a> <a href="#">Q5M9Q1</a>
Background:	The function of this protein remains unknown.
Synonyms:	bA424I5.1; C6orf194
Note:	Immunogen Sequence Homology: Human: 100%; Horse: 85%; Yeast: 82%; Dog: 77%; Rat: 77%; Mouse: 77%; Bovine: 77%; Rabbit: 77%



[View online »](#)

## Product images:



WB Suggested Anti-NKAPL Antibody Titration: 0.2-1 ug/ml; ELISA Titer: 1: 62500; Positive Control: NCI-H226 cell lysate