

Product datasheet for TA334921

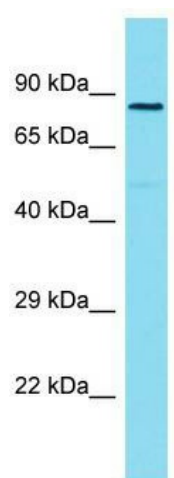
ZYG11A Rabbit Polyclonal Antibody

Product data:

| | |
|-------------------------|--|
| Product Type: | Primary Antibodies |
| Applications: | WB |
| Recommended Dilution: | WB |
| Reactivity: | Human |
| Host: | Rabbit |
| Isotype: | IgG |
| Clonality: | Polyclonal |
| Immunogen: | The immunogen for anti-ZYG11A antibody is synthetic peptide directed towards the C-terminal region of Human ZYG11A. Synthetic peptide located within the following region: PEQTAQLEELFMAVKELLAIVKQKTENLDDVTFLFTLKALWNLTDGSPA |
| Formulation: | Liquid. Purified antibody supplied in 1x PBS buffer with 0.09% (w/v) sodium azide and 2% sucrose. |
| Purification: | Affinity Purified |
| Conjugation: | Unconjugated |
| Storage: | Store at -20°C as received. |
| Stability: | Stable for 12 months from date of receipt. |
| Predicted Protein Size: | 85 kDa |
| Gene Name: | zyg-11 family member A, cell cycle regulator |
| Database Link: | NP_001004339 Entrez Gene 440590 Human Q6WRX3 |
| Background: | ZYG11A probably acts as target recruitment subunit in an E3 ubiquitin ligase complex ZYGA-CUL2-elongin BC. |
| Synonyms: | ZYG11 |
| Note: | Immunogen Sequence Homology: Dog: 100%; Horse: 100%; Human: 100%; Bovine: 92%; Rat: 85%; Rabbit: 77% |


[View online »](#)

Product images:



Host: Rabbit; Target Name: ZYG11A; Sample
Tissue: HeLa Whole Cell lysates; Antibody Dilution:
1.0 ug/ml