

Product datasheet for **TA334920**

ZNF506 Rabbit Polyclonal Antibody

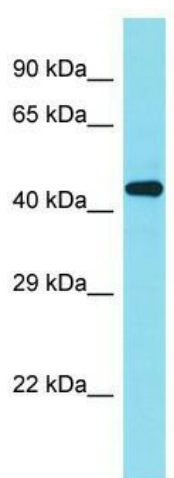
Product data:

Product Type:	Primary Antibodies
Applications:	WB
Recommended Dilution:	WB
Reactivity:	Human
Host:	Rabbit
Isotype:	IgG
Clonality:	Polyclonal
Immunogen:	The immunogen for anti-ZNF506 antibody is synthetic peptide directed towards the C-terminal region of Human ZNF506. Synthetic peptide located within the following region: SLSLKHKRAHTGEKPYKCEECGKAFTAFSTLTEHKIIHTGEKPYKCEECG
Formulation:	Liquid. Purified antibody supplied in 1x PBS buffer with 0.09% (w/v) sodium azide and 2% sucrose. <i>Note that this product is shipped as lyophilized powder to China customers.</i>
Purification:	Affinity Purified
Conjugation:	Unconjugated
Storage:	Store at -20°C as received.
Stability:	Stable for 12 months from date of receipt.
Predicted Protein Size:	45 kDa
Gene Name:	zinc finger protein 506
Database Link:	NP_001138876 Entrez Gene 440515 Human Q5JVG8
Background:	ZNF506 may be involved in transcriptional regulation.
Synonyms:	DKFZp761G1812; MGC27136
Note:	Immunogen Sequence Homology: Human: 100%; Mouse: 100%; Horse: 92%; Zebrafish: 92%; Dog: 86%; Pig: 86%; Rat: 86%; Bovine: 86%



[View online »](#)

Product images:



Host: Rabbit; Target Name: ZNF506; Sample
Tissue: Fetal Kidney lysates; Antibody Dilution: 1.0
ug/ml