

Product datasheet for **TA334919**

C8orf82 Rabbit Polyclonal Antibody

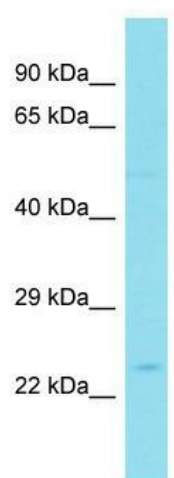
Product data:

Product Type:	Primary Antibodies
Applications:	WB
Recommended Dilution:	WB
Reactivity:	Human
Host:	Rabbit
Isotype:	IgG
Clonality:	Polyclonal
Immunogen:	The immunogen for anti-C8orf82 antibody is synthetic peptide directed towards the N-terminal region of Human C8orf82. Synthetic peptide located within the following region: TLRTLALARSRGARACSGDGGVSYTQGSPEPRTREYFYVDHQQQLFLD
Formulation:	Liquid. Purified antibody supplied in 1x PBS buffer with 0.09% (w/v) sodium azide and 2% sucrose. <i>Note that this product is shipped as lyophilized powder to China customers.</i>
Purification:	Affinity Purified
Conjugation:	Unconjugated
Storage:	Store at -20°C as received.
Stability:	Stable for 12 months from date of receipt.
Predicted Protein Size:	23 kDa
Gene Name:	chromosome 8 open reading frame 82
Database Link:	NP_001001795 Entrez Gene 414919 Human Q6P1X6
Background:	The function of this protein remains unknown.
Synonyms:	MGC70857
Note:	Immunogen Sequence Homology: Pig: 100%; Rat: 100%; Human: 100%; Mouse: 100%; Bovine: 100%; Guinea pig: 100%; Zebrafish: 86%; Dog: 85%



[View online »](#)

Product images:



Host: Rabbit; Target Name: C8orf82; Sample
Tissue: Fetal Liver lysates; Antibody Dilution: 1.0
ug/ml