

Product datasheet for TA334917

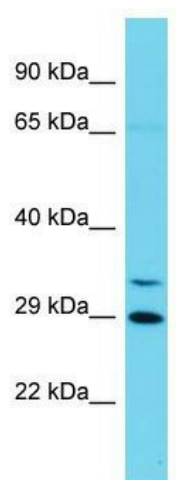
CCNYL1 Rabbit Polyclonal Antibody

Product data:

Product Type:	Primary Antibodies
Applications:	WB
Recommended Dilution:	WB
Reactivity:	Human
Host:	Rabbit
Isotype:	IgG
Clonality:	Polyclonal
Immunogen:	The immunogen for anti-CCNYL1 antibody is: synthetic peptide directed towards the middle region of Human CCNYL1. Synthetic peptide located within the following region: AELDFGEGEGHHLQHISDREMPEDLALESNPSDHPRASTIFLSKSQTDV
Formulation:	Liquid. Purified antibody supplied in 1x PBS buffer with 0.09% (w/v) sodium azide and 2% sucrose.
Purification:	Affinity Purified
Conjugation:	Unconjugated
Storage:	Store at -20°C as received.
Stability:	Stable for 12 months from date of receipt.
Predicted Protein Size:	33 kDa
Gene Name:	cyclin Y like 1
Database Link:	NP_689736 Entrez Gene 151195 Human Q8N7R7
Background:	The function of this protein remains unknown.
Synonyms:	FLJ40432
Note:	Immunogen Sequence Homology: Human: 100%; Dog: 90%; Pig: 90%; Rat: 90%; Horse: 90%; Mouse: 90%; Bovine: 90%; Rabbit: 90%; Zebrafish: 90%; Guinea pig: 90%; Goat: 85%



[View online »](#)

Product images:

Host: Rabbit; Target Name: CCNYL1; Sample
Tissue: Jurkat Whole Cell lysates; Antibody
Dilution: 1.0 ug/ml