

Product datasheet for **TA334914**

XKRX Rabbit Polyclonal Antibody

Product data:

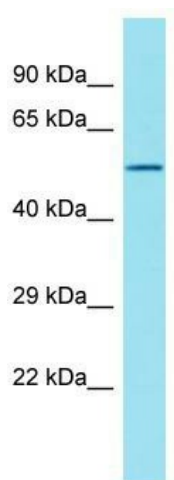
Product Type:	Primary Antibodies
Applications:	WB
Recommended Dilution:	WB
Reactivity:	Human
Host:	Rabbit
Isotype:	IgG
Clonality:	Polyclonal
Immunogen:	The immunogen for anti-XKRX antibody is synthetic peptide directed towards the N-terminal region of Human XKRX. Synthetic peptide located within the following region: FVHRDLAKDKPLSLFMHLILLGPVIRCLEAMIKYLTWKKKEEQEPPYVSL
Formulation:	Liquid. Purified antibody supplied in 1x PBS buffer with 0.09% (w/v) sodium azide and 2% sucrose. <i>Note that this product is shipped as lyophilized powder to China customers.</i>
Purification:	Affinity Purified
Conjugation:	Unconjugated
Storage:	Store at -20°C as received.
Stability:	Stable for 12 months from date of receipt.
Predicted Protein Size:	51 kDa
Gene Name:	XK related, X-linked
Database Link:	NP_997724 Entrez Gene 402415 Human Q6PP77
Background:	This gene encodes a protein that is related to a component of the XK/Kell complex of the Kell blood group system. The encoded protein includes several transmembrane domains, is known to be exposed to the cell surface, and may function as a membrane transporter.
Synonyms:	XKR2; XPLAC; XRG2
Note:	Immunogen Sequence Homology: Human: 100%; Dog: 93%; Pig: 93%; Rat: 93%; Horse: 93%; Mouse: 93%; Bovine: 93%; Guinea pig: 93%; Rabbit: 91%



[View online »](#)

Protein Families: Transmembrane

Product images:



Host: Rabbit; Target Name: XKRX; Sample Tissue: Fetal Kidney lysates; Antibody Dilution: 1.0 ug/ml