

Product datasheet for TA334912

RGS7BP Rabbit Polyclonal Antibody

Product data:

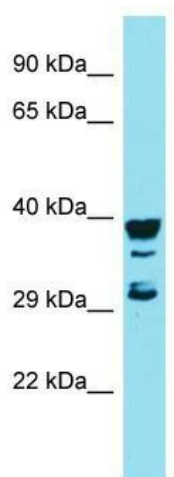
Product Type:	Primary Antibodies
Applications:	WB
Recommended Dilution:	WB
Reactivity:	Human
Host:	Rabbit
Isotype:	IgG
Clonality:	Polyclonal
Immunogen:	The immunogen for anti-RGS7BP antibody is: synthetic peptide directed towards the middle region of Human RGS7BP. Synthetic peptide located within the following region: RLYIQLQCCLEMYTTEMLKSICLLGSLQFHRKGKEPGGGTKSLDCKIEES
Formulation:	Liquid. Purified antibody supplied in 1x PBS buffer with 0.09% (w/v) sodium azide and 2% sucrose.
Purification:	Affinity Purified
Conjugation:	Unconjugated
Storage:	Store at -20°C as received.
Stability:	Stable for 12 months from date of receipt.
Predicted Protein Size:	28 kDa
Gene Name:	regulator of G-protein signaling 7 binding protein
Database Link:	NP_001025046 Entrez Gene 401190 Human Q6MZT1
Background:	This gene encodes a protein that binds to all members of the R7 subfamily of regulators of G protein signaling and regulates their translocation between the nucleus and the plasma membrane. The encoded protein could be regulated by reversible palmitoylation, which anchors it to the plasma membrane. Depalmitoylation localizes the protein to the nucleus. Polymorphisms in this gene may be associated with risk of aspirin-exacerbated respiratory disease. Alternatively spliced transcript variants encoding multiple isoforms have been observed for this gene.


[View online »](#)

Synonyms: R7BP

Note: Immunogen Sequence Homology: Dog: 100%; Pig: 100%; Horse: 100%; Human: 100%; Bovine: 93%; Rat: 92%; Guinea pig: 86%; Rabbit: 79%; Mouse: 77%

Product images:



Host: Rabbit; Target Name: RGS7BP; Sample
Tissue: MCF7 Whole Cell lysates; Antibody
Dilution: 1.0 ug/ml