

Product datasheet for **TA334909**

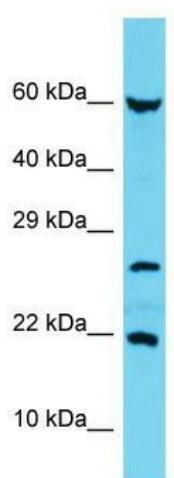
TMEM132E-DT Rabbit Polyclonal Antibody

Product data:

Product Type:	Primary Antibodies
Applications:	WB
Recommended Dilution:	WB
Reactivity:	Human
Host:	Rabbit
Isotype:	IgG
Clonality:	Polyclonal
Immunogen:	The immunogen for anti-C17orf102 antibody is: synthetic peptide directed towards the middle region of Human C17orf102. Synthetic peptide located within the following region: FCSRSSRGAGRGHPTPTPRVRWALAGNQPRCCAQLLSGRGGSGAQLRAGW
Formulation:	Liquid. Purified antibody supplied in 1x PBS buffer with 0.09% (w/v) sodium azide and 2% sucrose. <i>Note that this product is shipped as lyophilized powder to China customers.</i>
Purification:	Affinity Purified
Conjugation:	Unconjugated
Storage:	Store at -20°C as received.
Stability:	Stable for 12 months from date of receipt.
Predicted Protein Size:	18 kDa
Gene Name:	chromosome 17 open reading frame 102
Database Link:	NP_997337 Entrez Gene 400591 Human
Background:	The function of this protein remains unknown.
Synonyms:	FLJ44815
Note:	Immunogen Sequence Homology: Human: 100%; Rabbit: 93%



[View online »](#)

Product images:

Host: Rabbit; Target Name: C17orf102; Sample
Tissue: MCF7 Whole Cell lysates; Antibody
Dilution: 1.0 ug/ml