

Product datasheet for **TA334907**

C11orf87 Rabbit Polyclonal Antibody

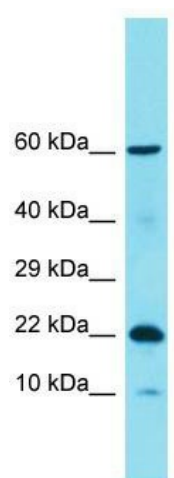
Product data:

Product Type:	Primary Antibodies
Applications:	WB
Recommended Dilution:	WB
Reactivity:	Human
Host:	Rabbit
Isotype:	IgG
Clonality:	Polyclonal
Immunogen:	The immunogen for anti-C11orf87 antibody is: synthetic peptide directed towards the C-terminal region of Human C11orf87. Synthetic peptide located within the following region: EEYERDHCSGSRGGGLPRPGRQAPTHAKETRLERQPRDSPFCAPSNASS
Formulation:	Liquid. Purified antibody supplied in 1x PBS buffer with 0.09% (w/v) sodium azide and 2% sucrose. <i>Note that this product is shipped as lyophilized powder to China customers.</i>
Purification:	Affinity Purified
Conjugation:	Unconjugated
Storage:	Store at -20°C as received.
Stability:	Stable for 12 months from date of receipt.
Predicted Protein Size:	21 kDa
Gene Name:	chromosome 11 open reading frame 87
Database Link:	NP_997528 Entrez Gene 399947 Human Q6NUJ2
Background:	The function of this protein remains unknown.
Synonyms:	LOH11CR1A; NEURIM1
Note:	Immunogen Sequence Homology: Human: 100%; Pig: 93%; Rat: 93%; Horse: 93%; Mouse: 93%; Rabbit: 93%; Guinea pig: 93%; Dog: 86%; Bovine: 79%
Protein Families:	Transmembrane



[View online »](#)

Product images:



Host: Rabbit; Target Name: C11orf87; Sample
Tissue: COLO205 Whole Cell lysates; Antibody
Dilution: 1.0 ug/ml