

Product datasheet for **TA334906**

C10orf120 Rabbit Polyclonal Antibody

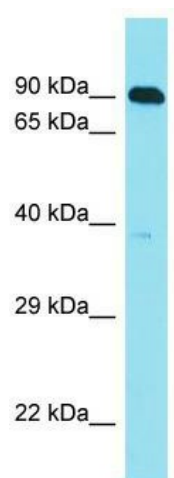
Product data:

| | |
|-------------------------|---|
| Product Type: | Primary Antibodies |
| Applications: | WB |
| Recommended Dilution: | WB |
| Reactivity: | Human |
| Host: | Rabbit |
| Isotype: | IgG |
| Clonality: | Polyclonal |
| Immunogen: | The immunogen for anti-C10orf120 antibody is synthetic peptide directed towards the C-terminal region of Human C10orf120. Synthetic peptide located within the following region: ANQDKKEEAEGKNTKRREIKMNVVFKSKEPKKCLTYHGNDRKSFLPAKKP |
| Formulation: | Liquid. Purified antibody supplied in 1x PBS buffer with 0.09% (w/v) sodium azide and 2% sucrose. <i>Note that this product is shipped as lyophilized powder to China customers.</i> |
| Purification: | Affinity Purified |
| Conjugation: | Unconjugated |
| Storage: | Store at -20°C as received. |
| Stability: | Stable for 12 months from date of receipt. |
| Predicted Protein Size: | 39 kDa |
| Gene Name: | chromosome 10 open reading frame 120 |
| Database Link: | NP_001010912 Entrez Gene 399814 Human Q5SQS8 |
| Background: | The function of this protein remains unknown. |
| Synonyms: | bA318C4.1 |
| Note: | Immunogen Sequence Homology: Human: 100% |



[View online »](#)

Product images:



Host: Rabbit; Target Name: C10orf120; Sample
Tissue: HepG2 Whole Cell lysates; Antibody
Dilution: 1.0 ug/ml