

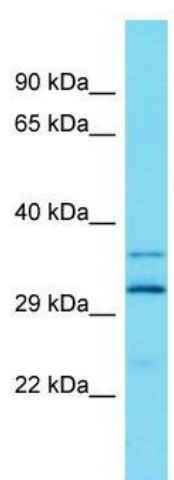
Product datasheet for **TA334905**

ARL13A Rabbit Polyclonal Antibody

Product data:

Product Type:	Primary Antibodies
Applications:	WB
Recommended Dilution:	WB
Reactivity:	Human
Host:	Rabbit
Isotype:	IgG
Clonality:	Polyclonal
Immunogen:	The immunogen for anti-ARL13A antibody is: synthetic peptide directed towards the middle region of Human ARL13A. Synthetic peptide located within the following region: LTHLLSDKRVAGKPILILANKQDKKKALMPCDIIDYLLKKLVKENKCPC
Formulation:	Liquid. Purified antibody supplied in 1x PBS buffer with 0.09% (w/v) sodium azide and 2% sucrose.
Purification:	Affinity Purified
Conjugation:	Unconjugated
Storage:	Store at -20°C as received.
Stability:	Stable for 12 months from date of receipt.
Predicted Protein Size:	32 kDa
Database Link:	NP_001013008 Entrez Gene 392509 Human
Background:	The function of this protein remains unknown.
Synonyms:	ARL13; dJ341D10.2
Note:	Immunogen Sequence Homology: Human: 100%; Rat: 86%; Horse: 86%; Mouse: 86%; Rabbit: 86%; Pig: 83%


[View online »](#)

Product images:


Host: Rabbit; Target Name: ARL13A; Sample
Tissue: Fetal Liver lysates; Antibody Dilution: 1.0
ug/ml